

AUSPLOW

Australian designed and manufactured



CAMERA & LIGHTING SPARE PARTS MANUAL

VERSION 2.6

#00944

This page is intentionally left blank

Contents

| | |
|---|-----------|
| Information | 3 |
| Spare Parts Return Policy | 4 |
| Procedure for Warranty Claims | 5 |
| 1.0 Camera Kits | 6 |
| 1.1 Camera System Assemblies | 6 |
| 1.2 Camera Assembly | 9 |
| 1.3 Mounting Kit Tank Ball Camera | 10 |
| 1.4 Camera Shroud Assembly | 12 |
| 1.5 Metering Unit Window Assembly | 14 |
| 1.6 Camera Harnesses | 15 |
| 1.7 Camera Harness Extensions | 16 |
| 1.8 Camera Cable Extensions | 17 |
| 1.9 Camera Monitor | 18 |
| 1.10 Camera Systems | 19 |
| 2.0 Camera Installation Guide | 20 |
| 2.1 Camera Loom Fitment | 20 |
| 2.2 Camera Fitment | 23 |
| 3.0 Lighting Kits | 26 |
| 3.1 Multistream Series II Lights | 27 |
| 3.2 Multistream Series II Lighting Kit | 28 |
| 3.3 Multistream Series II Beacon Assy | 32 |
| 3.4 Multistream Series II Light Assy 40W | 32 |
| 3.5 Multistream Series II Light Bar Assy | 33 |
| 3.6 Lighting Kit Brackets | 34 |
| 3.7 Multistream Series II Light Switch Box Assy | 35 |
| 3.8 Multistream Series II Lighting Harness | 36 |
| 3.9 Multistream Series II Lighting Kits | 36 |

Information

This spare parts manual covers optional components such as Camera and Lighting Kits fitted to the Ausplow Multistreams and Air Seeders.

Throughout this manual some generic acronyms will be used:

| | | |
|------|---|-----------------------|
| ORB: | Obsolete Replaced By, | |
| NLA: | No Longer Available, | |
| BSN: | By Serial Number, | |
| N/A: | Not Available or Not Applicable, | |
| BSO: | By Special Order (extended lead times may apply), | |
| NS: | Not Shown, | |
| NSS: | Not Supplied Separately, | |
| SS: | Stainless Steel, | |
| OAH: | Over All Height, | OAL: Over All Length. |

Due to the age of some machines and Ausplow's policy of continuous improvement, a number of changes may have been made from the original build specification of a machine.

It is advised that ALL parts be double checked where possible with the more detailed information provided within different areas of this manual.

Identifying features and dimensions are provided to assist with identification of components. Parts that are correctly supplied but don't fit due to the failure of an individual to use the identification methods provided may be subjected to a restocking fee.

Components that have been manufactured to a BSO requirement may not be eligible for return. Ausplow reserves the right to change specification/s of components without notice.

Spare Parts Return Policy

Ausplow parts may only be returned by Ausplow Dealers under the following conditions:

- Provide a **copy of the Ausplow Sales Order/Tax invoice** which the goods were purchased on with the returned goods.
 - That way we know who they were from, when they were ordered and what Branch is to receive the credit.
- **List the part numbers and quantities** of the returned items.
- Provide a brief description of **why the goods are being returned**,
 - ie: incorrectly supplied, incorrectly ordered etc
 - This helps us identify if the restocking fee is applicable.

6 Davison Road, Cockburn Central WA 6164
P O Box 5010, South Lake WA 6964
Ph: (61 8) 9417 8877 Fax: (61 8) 9417 8878
ausplow@ausplow.com.au
www.ausplow.com.au

AUSPLOW FARMING SYSTEMS

AUSEEDER DBS - MULTISTREAM - EASITILL

TAX INVOICE

Ausplow Farming Systems Pty Ltd
as Trustee for
Ausplow Farming Systems Trust
ABN 57 168 859 933
Trading As:
Ausplow Farming Systems

| |
|---------|
| Bill To |
| |

| |
|------------|
| Deliver To |
| |

| | |
|-----------|---|
| Number | |
| Date | |
| PO Number | |
| Cust Code | |
| Due Date | |
| Page | 1 |

| Product Code | Product Description | Qty | Price | Discount | Amount Excl GST |
|--|---------------------------------------|-------|--------------------|----------|-----------------|
| 01132 | Shank - Auseeder - Hyd Recoil Painted | 2.00 | | 20.00 | |
| 01287 | Blade Assembly DBA29-130 9" Blade | 40.00 | | 20.00 | |
| 01288 | Blade Assembly - DBA27-130 7" Blade | 50.00 | | 20.00 | |
| <p>RETURNED X 20 INCORRECTLY ORDERED</p> | | | | | |
| EFT DETAILS: BSB: 086-136 A/C#: 795 293 766 | | | Sub-Total (Ex GST) | | |
| <p>Retention of Title: Title to the goods remains with Ausplow Farming Systems until payment. The goods must be kept separate from other goods received & marked as owned by Ausplow Farming Systems. Any moneys received for the sale of the goods must be held for the benefit of Ausplow Farming Systems & paid to Ausplow Farming Systems until the debt is paid in full. If the debtor fails to pay the debt Ausplow Farming Systems can enter the premises where the goods are located & seize those goods and sell them to recover the amount of debt still owing.</p> | | | GST | | |
| | | | Total (Inc GST) | | |

- The return freight is at the **Dealer's expense**.
- The returned items must be in **resalable condition**.
 - ie: in a clean, unused and undamaged condition
- A standard **20% restocking fee** on the Dealer Net Price applies.
- International orders and special orders are non-refundable.

- **Prior approval** of Ausplow General Management required for **any bulk returns.**

When all information is received, stock is counted and assessed as re-saleable, a credit note will be sent less the 20% restocking fee on the Dealer Net Price. No credit will be processed unless all the required information is received.

If more than a few items are to be returned, and if purchased more than 12 months ago, please **advise the Parts Section prior to returning these items.**

Procedure for Warranty Claims

- Contact the Ausplow Warranty Manager (Service Manager) initially.
- Send a completed Warranty Claim form (below) to our Warranty Department: warranty@ausplow.com.au
- If instructed by Service Manager, you may need to return parts claimed under warranty to Ausplow or request pictures of parts to be emailed.
- If approved an Ausplow Claim Reference Number will be assigned and a Warranty Sales order will be created at no charge and will advise when the order is ready.
- Where labour or subcontract cost are being claimed a separate Warranty Claim Form – Labour/Outsource (below) is to be submitted.

| AUSPLOW Digging deep for every farmer. | | Warranty Claim Form - Parts | |
|--|--------------|-----------------------------|--|
| Ausplow Claim Reference # assigned by Ausplow | | | |
| Dealer Reference / Purchase Order # | | | |
| Dealer | | Date of Claim | |
| Branch | | Date of Failure | |
| Owner / Trading Name | | | |
| Serial # | Date of Sale | Model # | |
| * Claims will not be accepted if date of claim is more than 1 month after date of failure without prior approval | | | |
| NATURE OF FAILURE describe fully | | | |
| PROPOSED RECTIFICATION state procedures to be undertaken | | | |
| Claim for Parts Only | | | |
| PARTS REQUESTED | | | |
| QTY | PART # | DESCRIPTION | |
| | | | |
| FREIGHT INSTRUCTIONS | | | |
| DELIVERY ADDRESS | | | |
| COMPLETED BY DEALER (Full Name) | | | |
| REVIEWED BY AUSPLOW | | | |
| Ausplow use only | | | |
| Approved Yes / No | | Supplier Notified Yes / No | |
| Procurement Notified Yes / No | | Claim Reference | |
| Comments | | | |

| AUSPLOW Digging deep for every farmer. | | Warranty Claim Form - Labour/Outsource | |
|--|--------------|--|---------------|
| Ausplow Claim Reference # assigned by Ausplow | | | |
| Dealer Reference / Purchase Order # | | | |
| Dealer | | Date of Claim | |
| Branch | | Date of Failure | |
| Owner / Trading Name | | | |
| Serial # | Date of Sale | Model # | |
| * Claims will not be accepted if date of claim is more than 1 month after date of failure without prior approval | | | |
| NATURE OF FAILURE describe fully | | | |
| PROPOSED RECTIFICATION state procedures to be undertaken | | | |
| Claim for Labour, Travel and Outsourced Items only | | | |
| LABOUR - Excluding Travel Time - Labour is not paid for travelling time | | | |
| TOTAL HOURS CLAIMED | | AT \$100.00/HOUR | TOTAL CLAIMED |
| TRAVEL | | | |
| TOTAL KILOMETRES | | AT \$1.00/KILOMETRE | TOTAL CLAIMED |
| OUTSOURCE LABOUR/MATERIALS CLAIMED (invoice copies must be forwarded) | | | |
| NAME | INVOICE # | DETAILS OF WORK | AMOUNT |
| | | | |
| TOTAL | | | \$ - |
| COMPLETED BY DEALER (Full Name) | | | |
| REVIEWED BY AUSPLOW | | | |
| Ausplow use only | | | |
| Approved Yes / No | | Supplier Notified Yes / No | |
| Procurement Notified Yes / No | | Claim Reference | |
| Comments | | | |

1.0 Camera Kits

When fitting cameras, it is important they are fitted in the correct position to optimise the performance of the system.

Refer to the fitting instructions in this manual for recommended fitting and set up procedures.

1.1 Camera System Assemblies

| Item # | Qty | Part # | Description |
|--------|-----|--------|-----------------------------------|
| All | 1 | 04591 | CAMERA SYSTEM 4 CAMERA |
| | 8 | 01092 | CABLE TIE 550 x 13mm |
| | 16 | 04316 | CABLE TIE 290 x 4.8mm |
| | 2.3 | 10931 | CONDUIT SPLIT 16mm ID |
| | 1 | 03276 | MONITOR TANK & METER 1 and 2 |
| | 1 | 26452 | CAMERA MONITOR POWER LEAD |
| | 4 | 13153 | CAMERA ASSY (BALL, WATERPROOF) |
| | 2 | 13838 | MOUNTING KIT BALL CAMERA TANK |
| | 2 | 13849 | CAMERA SHROUD ASSEMBLY c/w SCREWS |
| | 2 | 14435 | CABLE EXTENSION CAMERA 2m |
| | 2 | 15527 | CABLE COVER 300mm LG |
| | 1 | 15429 | HARNESS MAIN 4 CAMERA 17m |
| | 1 | 15718 | HARNESS MAIN 4 CAMERA 12m |
| | 1 | 03275 | HARNESS CAMERA DISPLAY |

| Item # | Qty | Part # | Description |
|--------|-----|--------|-----------------------------------|
| All | 1 | 04580 | CAMERA SYSTEM 6 CAMERA |
| | 12 | 01092 | CABLE TIE 550 x 13mm |
| | 18 | 04316 | CABLE TIE 290 x 4.8mm |
| | 2.3 | 10931 | CONDUIT SPLIT 16mm ID |
| | 2 | 03276 | MONITOR TANK & METERS - 1, 2 & 3 |
| | 2 | 26452 | CAMERA MONITOR POWER LEAD |
| | 6 | 13153 | CAMERA ASSY (BALL, WATERPROOF) |
| | 3 | 13838 | MOUNTING KIT BALL CAMERA TANK |
| | 3 | 13849 | CAMERA SHROUD ASSEMBLY c/w SCREWS |
| | 2 | 14435 | CABLE EXTENSION CAMERA 2m |
| | 1 | 14225 | CABLE EXTENSION CAMERA 5m |
| | 3 | 15527 | CABLE COVER 300mm LG |
| | 1 | 15429 | HARNESS MAIN 4 CAMERA 17m |
| | 1 | 15718 | HARNESS MAIN 4 CAMERA 12m |
| | 2 | 03275 | HARNESS CAMERA DISPLAY |

Ausplow Camera & Lighting Spare Parts Manual

| Item # | Qty | Part # | Description |
|--------|-----|--------|-------------------------------------|
| All | 1 | 04592 | CAMERA SYSTEM 8 CAMERA |
| | 16 | 01092 | CABLE TIE 550 x 13mm |
| | 24 | 04316 | CABLE TIE 290 x 4.8mm |
| | 2.3 | 10931 | CONDUIT SPLIT 16mm ID |
| | 2 | 03276 | MONITOR TANK & METERS - 1, 2, 3 & 4 |
| | 2 | 26452 | CAMERA MONITOR POWER LEAD |
| | 8 | 13153 | CAMERA ASSY (BALL, WATERPROOF) |
| | 4 | 13838 | MOUNTING KIT BALL CAMERA TANK |
| | 4 | 13849 | CAMERA SHROUD ASSEMBLY c/w SCREWS |
| | 3 | 14435 | CABLE EXTENSION CAMERA 2m |
| | 1 | 14225 | CABLE EXTENSION CAMERA 5m |
| | 4 | 15527 | CABLE COVER 300mm LG |
| | 2 | 15429 | HARNESS MAIN 4 CAMERA 17m |
| | 1 | 15718 | HARNESS MAIN 4 CAMERA 12m |
| | 2 | 03275 | HARNESS CAMERA DISPLAY |

| Item # | Qty | Part # | Description |
|--------|-----|--------|--|
| All | 1 | 04581 | CAMERA SYSTEM 10 CAMERA |
| | 20 | 01092 | CABLE TIE 550 x 13mm |
| | 30 | 04316 | CABLE TIE 290 x 4.8mm |
| | 2.3 | 10931 | CONDUIT SPLIT 16mm ID |
| | 3 | 03276 | MONITOR TANK & METERS - 1, 2, 3, 4 & 5 |
| | 3 | 26452 | CAMERA MONITOR POWER LEAD |
| | 10 | 13153 | CAMERA ASSY (BALL, WATERPROOF) |
| | 5 | 13838 | MOUNTING KIT BALL CAMERA TANK |
| | 5 | 13849 | CAMERA SHROUD ASSEMBLY c/w SCREWS |
| | 4 | 14435 | CABLE EXTENSION CAMERA 2m |
| | 1 | 14225 | CABLE EXTENSION CAMERA 5m |
| | 5 | 15527 | CABLE COVER 300mm LG |
| | 2 | 15429 | HARNESS MAIN 4 CAMERA 17m |
| | 1 | 15718 | HARNESS MAIN 4 CAMERA 12m |
| | 3 | 03275 | HARNESS CAMERA DISPLAY |

Ausplow Camera & Lighting Spare Parts Manual

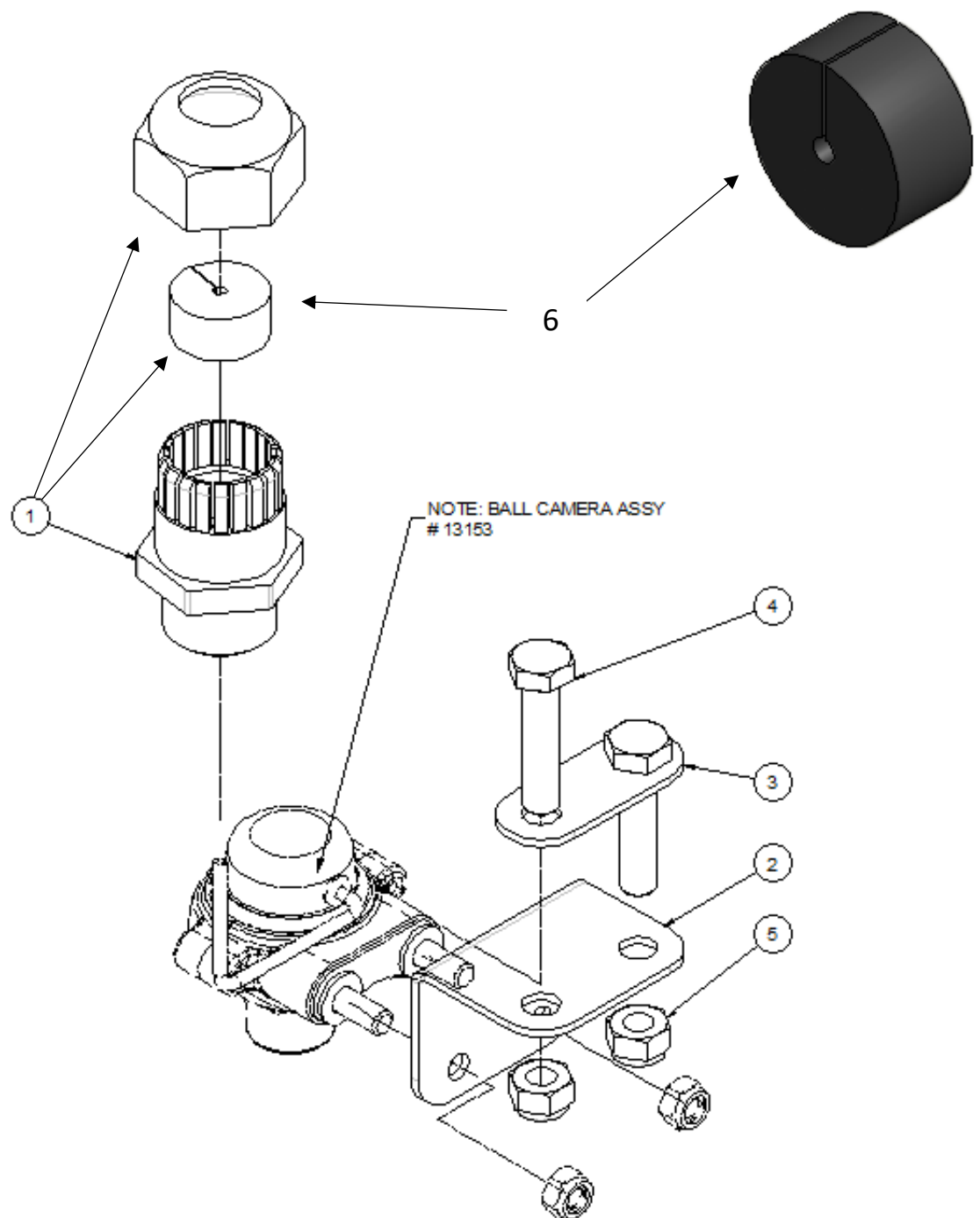
| Item # | Qty | Part # | Description |
|--------|-----|--------|---|
| All | 1 | 04593 | CAMERA SYSTEM 12 CAMERA |
| | 24 | 01092 | CABLE TIE 550 x 13mm |
| | 36 | 04316 | CABLE TIE 290 x 4.8mm |
| | 2.3 | 10931 | CONDUIT SPLIT 16mm ID |
| | 3 | 03276 | MONITOR TANK & METERS - 1, 2, 3, 4, 5 & 6 |
| | 3 | 26452 | CAMERA MONITOR POWER LEAD |
| | 12 | 13153 | CAMERA ASSY (BALL, WATERPROOF) |
| | 6 | 13838 | MOUNTING KIT BALL CAMERA TANK |
| | 6 | 13849 | CAMERA SHROUD ASSEMBLY c/w SCREWS |
| | 5 | 14435 | CABLE EXTENSION CAMERA 2m |
| | 1 | 14225 | CABLE EXTENSION CAMERA 5m |
| | 6 | 15527 | CABLE COVER 300mm LG |
| | 3 | 15429 | HARNESS MAIN 4 CAMERA 17m |
| | 1 | 15718 | HARNESS MAIN 4 CAMERA 12m |
| | 3 | 03275 | HARNESS CAMERA DISPLAY |

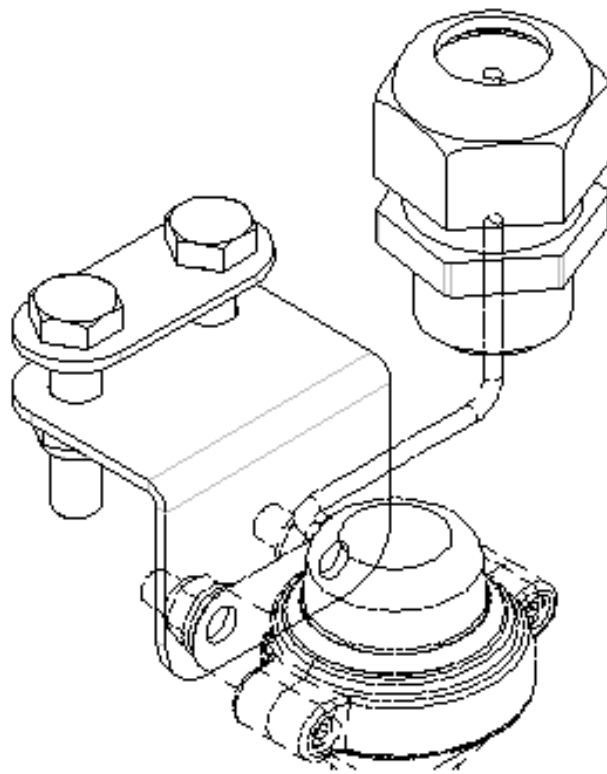
1.2 Camera Assembly



| Item # | Qty | Part # | Description |
|--------|-----|--------|-----------------------------------|
| All | 1 | 13153 | CAMERA ASSEMBLY (BALL WATERPROOF) |
| | 1 | 13150 | CAMERA ASSEMBLY (As Supplied) |
| | 2 | 09192 | BOLT M6 x 20mm SS |
| | 2 | 09331 | WASHER FLAT M6 SS |
| | 2 | 09194 | NUT M6 Nylock SS |

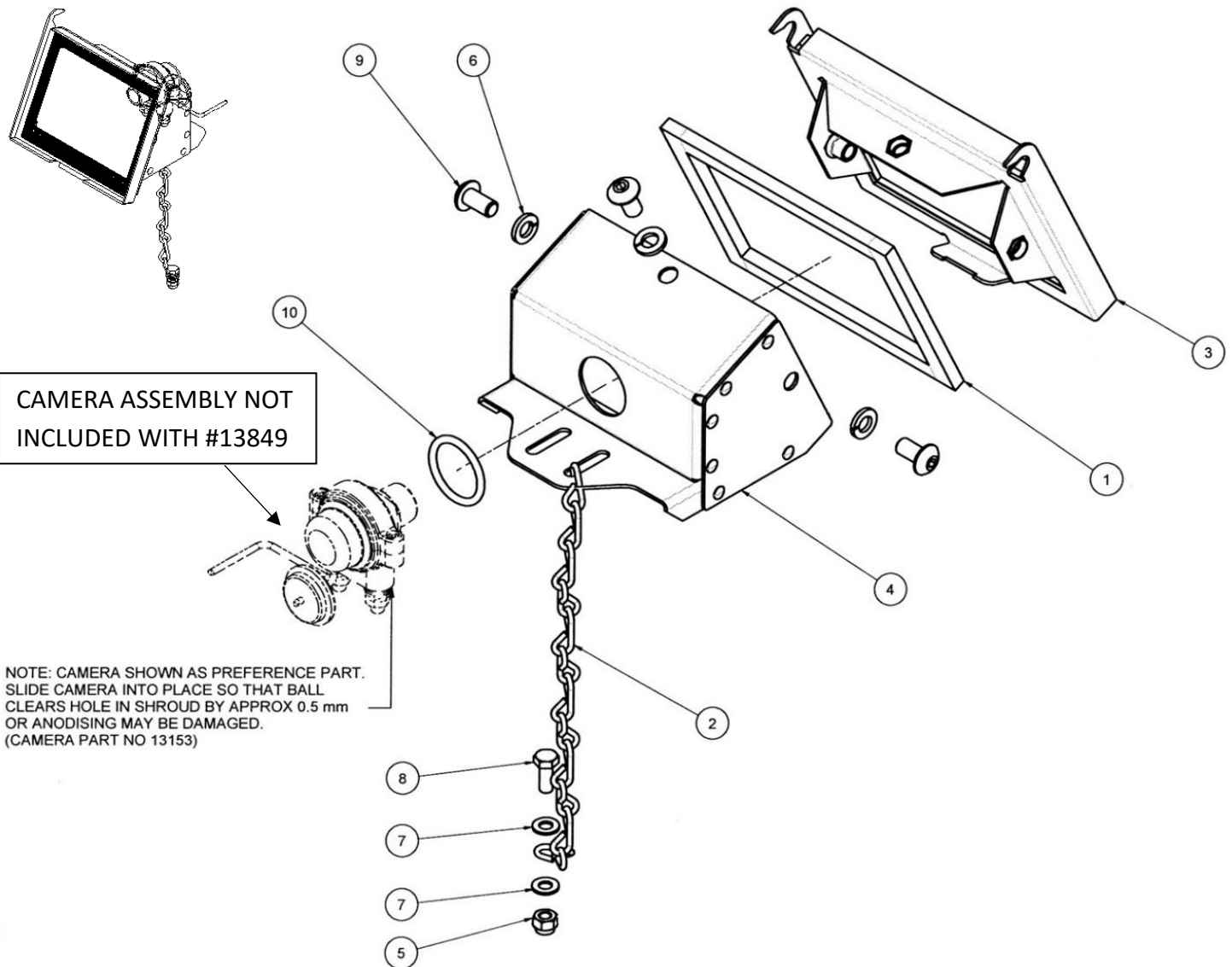
1.3 Mounting Kit Tank Ball Camera





| Item # | Qty | Part # | Description |
|--------|-----|--------|--------------------------------|
| All | 1 | 13838 | BALL CAMERA TANK MOUNTING KIT |
| 1 | 1 | 13152 | CAMERA CABLE GLAND ASSY 25mm |
| 2 | 1 | 13154 | BALL CAMERA TANK MOUNT BRACKET |
| 3 | 1 | 13839 | BALL CAMERA TANK MOUNT WASHER |
| 4 | 2 | 09251 | BOLT M8 x 35mm SS |
| 5 | 2 | 09277 | NUT M8 Nylock SS |
| 6 | 1 | 13126 | GROMMET CAMERA GLAND REDUCING |

1.4 Camera Shroud Assembly

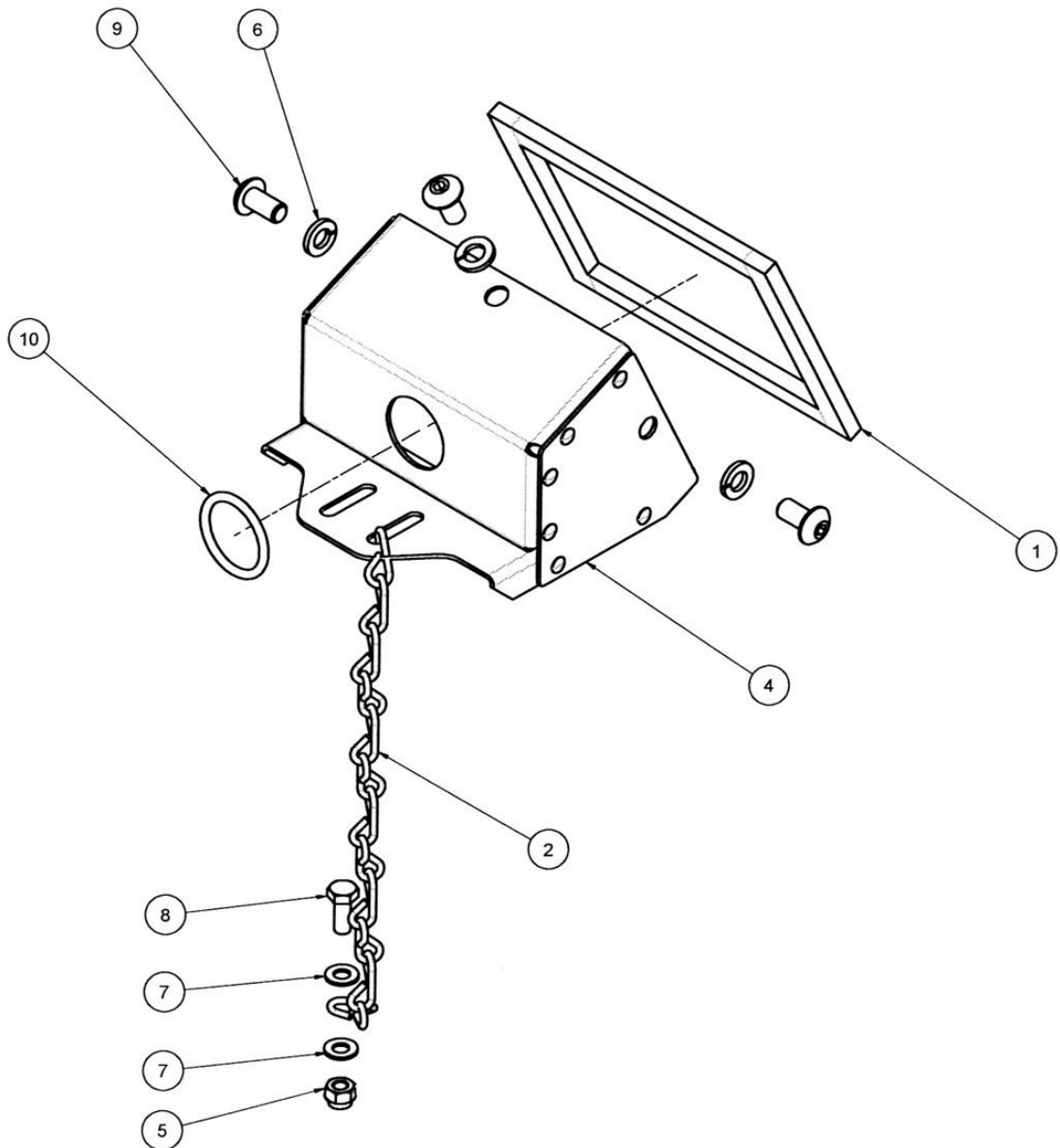


Metering Unit Camera Shroud Assembly

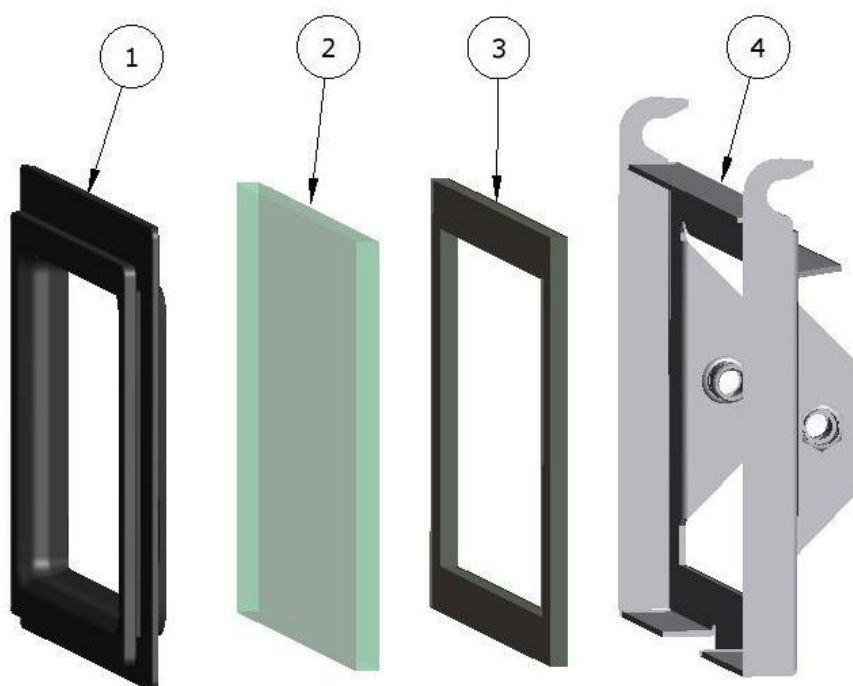
| Item # | Qty | Part # | Description |
|--------|-----|--------|--|
| All | 1 | 13849 | METERING UNIT CAMERA SHROUD ASSY |
| 1 | 1 | 10833 | ADHESIVE SEAL 1 SIDED (sold per meter) |
| 2 | 1 | 26355 | CHAIN 2.5 x 270mm LG SS |
| 3 | 1 | 26889 | WINDOW FRAME ASSY CAMERA MOUNTING |
| 4 | 1 | 13843 | BALL CAMERA SHROUD ASSY |
| 5 | 1 | 09064 | NUT M6 Nylock |
| 6 | 3 | 09105 | WASHER SPRING M8 SS |
| 7 | 2 | 09224 | WASHER FLAT M6 |
| 8 | 1 | 09247 | BOLT M6 x 16mm |
| 9 | 3 | 09303 | SCREW M8 x 16mm BUTTON HEAD SS |
| 10 | 1 | 09672 | O RING 30 x 3.5mm |

Part # 13800

Same as #13849 without item 3



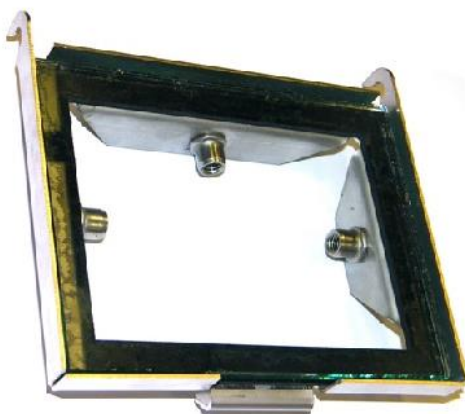
1.5 Metering Unit Window Assembly



| Item # | Qty | Part # | Description |
|--------|-----|--------|--|
| 1 | 1 | 26690 | SEAL METERING UNIT WINDOW - RUBBER |
| 2 | 1 | 06885 | GLASS LAMINATED 6mm |
| 3 | 1 | 26745 | METER UNIT GLASS GASKET – NEOPRENE 3mm |
| 4 | 1 | 13841 | WINDOW FRAME ASSEMBLY CAMERA |
| 2,3,4 | 1 | 26889 | WINDOW FRAME ASSY CAMERA MOUNTING |

Part # 26889

Items 2, 3 & 4



1.6 Camera Harnesses

Current Type

New type 4 camera harness #15429 is now used which replaces the 13147, 13148 and 13149 camera harnesses for 4, 8 and 12 camera systems. For example, an 8 camera system will require 2 x 15429.



These run along the drawbar and along the MS chassis connecting to camera cable extensions that run to the top of the bins and to the cameras on the metering unit's inspection windows.

On Tow Behind machines #15719 – 4 Camera Harness Extension 15m is connected to #15429 camera harness.

Old Type

Older camera harness shown opposite are **not interchangeable** with the current #15429 camera harness.



| Part # | Description |
|--------|-----------------------------------|
| 13147 | CAMERA HARNESS ASSEMBLY 4 CAMERA |
| 13148 | CAMERA HARNESS ASSEMBLY 8 CAMERA |
| 13149 | CAMERA HARNESS ASSEMBLY 12 CAMERA |

1.7 Camera Harness Extensions

Current Type

New type 4 camera harness 15m extensions #15719 are used when a camera system is fitted to a Tow Behind Multistream bin. They are part of the 14550, 14551 and 14552 camera extension harness kits.



Old Type

Older camera harness extension #14009 shown below is **not interchangeable** with the current camera harness extension.



| Item # | Part # | Description |
|--------|--------|---|
| 1 | 14009 | CAMERA BAR EXT LOOM 16.5m – 12 CAMERA CAPACITY |
| 2 | 14367 | DUST PLUG CAMERA HARNESS SCREW IN AMP FITTING |
| 3 | 14368 | DUST PLUG CAMERA HARNESS SCREW ON AMP FITTING CAP |

1.8 Camera Cable Extensions



| Part # | Description |
|--------|----------------------------|
| 14434 | CAMERA EXTENSION CABLE 1m |
| 14435 | CAMERA EXTENSION CABLE 2m |
| 14225 | CAMERA EXTENSION CABLE 5m |
| 14226 | CAMERA EXTENSION CABLE 10m |
| 14227 | CAMERA EXTENSION CABLE 15m |
| 14228 | CAMERA EXTENSION CABLE 20m |
| 14229 | CAMERA EXTENSION CABLE 30m |

1.9 Camera Monitor



1

2

| Item # | Part # | Description |
|--------|--------|--|
| 1 | 03276 | TOUCH SCREEN HD QUAD SPLITTING MONITOR |
| 2 | 26452 | CAMERA MONITOR POWER LEAD |

1.10 Camera Systems

- Industrial 7" HD Quad Splitting Monitor, Ball Cameras with IR, Connector and wiring looms
- Ball camera tank mount, Stainless steel metering unit camera door and shroud assembly

| GRANULAR | | | | |
|---------------|--------|---------------|--------------------|--------------|
| Bin | # Bins | Configuration | Meter Unit Cameras | Tank Cameras |
| A6000 DB | 2 | 2G | 2 | 2 |
| A9500 BT | 2 | 2G | 2 | 2 |
| A9500 BH* | 2 | 2G | 2 | 2 |
| A11000 BT | 3 | 3G | 3 | 3 |
| A11000 BH* | 3 | 3G | 3 | 3 |
| M6000 DB | 3 | 3G | 3 | 3 |
| M9000 BT | 3 | 3G | 3 | 3 |
| M9000 BH* | 3 | 3G | 3 | 3 |
| M14000 HD BT | 3 | 3G | 3 | 3 |
| M14000 HD BH* | 3 | 3G | 3 | 3 |
| M12000 BT | 4 | 4G | 4 | 4 |
| M12000 BH* | 4 | 4G | 4 | 4 |
| M15000 HD BT | 4 | 4G | 4 | 4 |
| M15000 HD BH* | 4 | 4G | 4 | 4 |
| M18000 HD BT | 4 | 4G | 4 | 4 |
| M19500 HD BT | 5 | 5G | 5 | 5 |
| M22000 HD BT | 5 | 5G | 5 | 5 |
| M24000 HD BT | 6 | 6G | 6 | 6 |

| LIQUID | | | | |
|---------------|--------|---------------|--------------------|--------------|
| Bin | # Bins | Configuration | Meter Unit Cameras | Tank Cameras |
| M6000 DB | 3 | 2G1L | 2 | 2 |
| M9000 BT | 3 | 2G1L | 2 | 2 |
| M9000 BH* | 3 | 2G1L | 2 | 2 |
| M14000 HD BT | 3 | 2G1L | 2 | 2 |
| M14000 HD BH* | 3 | 2G1L | 2 | 2 |
| M12000 BT | 4 | 3G1L | 3 | 3 |
| M12000 BH* | 4 | 3G1L | 3 | 3 |
| M15000 HD BT | 4 | 3G1L | 3 | 3 |
| M15000 HD BH* | 4 | 3G1L | 3 | 3 |
| M18000 HD BT | 4 | 3G1L | 3 | 3 |
| M19500 HD BT | 5 | 4G1L | 4 | 4 |
| M22000 HD BT | 5 | 4G1L | 4 | 4 |
| M24000 HD BT | 6 | 5G1L | 5 | 5 |
| M27000 HD BT | 6 | 5G1L | 5 | 5 |
| M28000 HD BT | 7 | 6G1L | 6 | 6 |

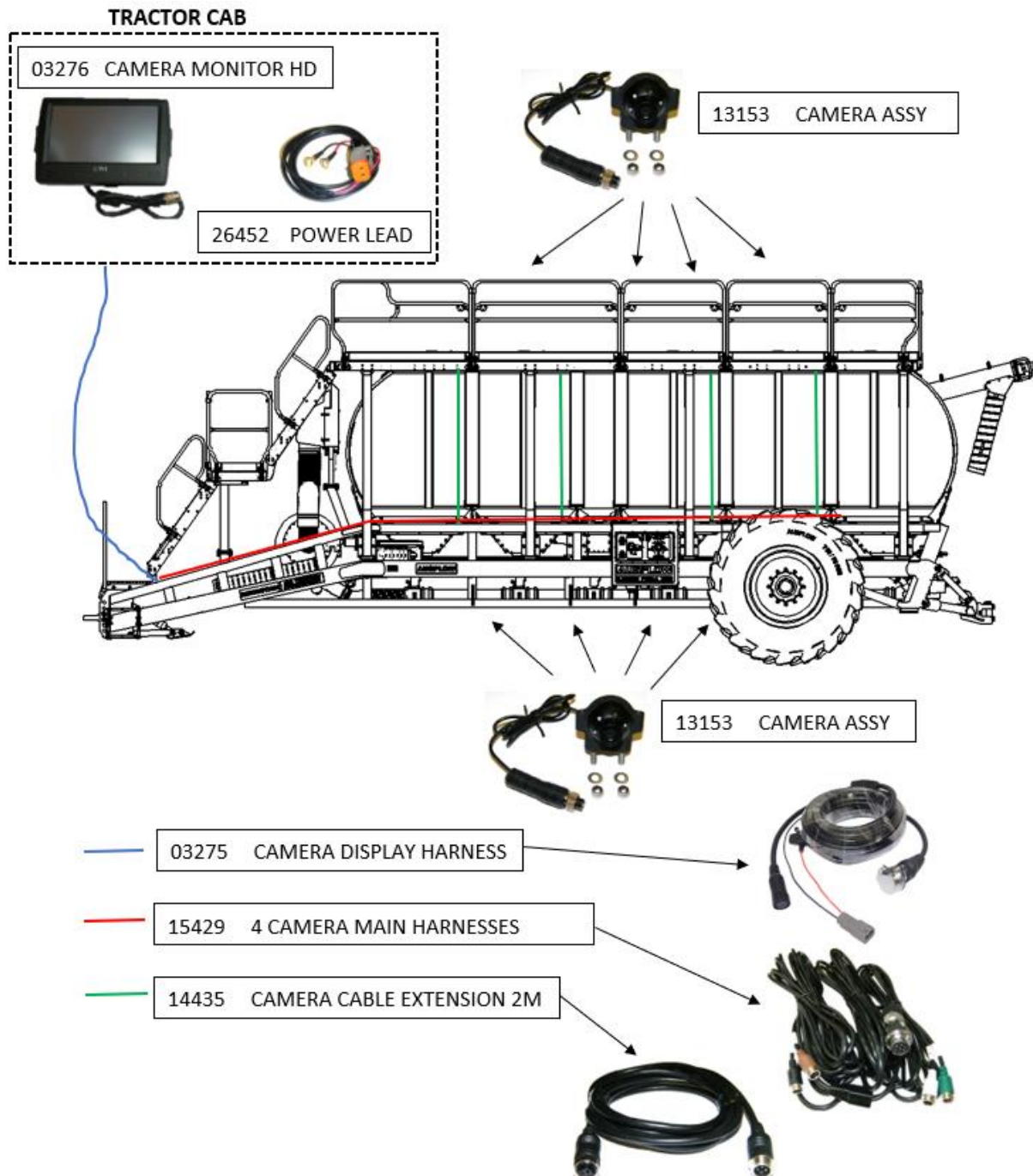
| Code | Camera Configurations |
|-------|---|
| 04591 | 4 camera system (7" HD Quad splitting monitor, 4 ball cameras, 8 channel connector & loom) |
| 04580 | 6 camera system (2 x 7" HD Quad splitting monitor, 6 ball cameras, 8 channel connector & loom) |
| 04592 | 8 camera system (2 x 7" HD Quad splitting monitor, 8 ball cameras, 12 channel connector & loom) |
| 04581 | 10 camera system (3 x 7" HD Quad splitting monitor, 10 ball cameras, 12 channel connector & loom) |
| 04593 | 12 camera system (3 x 7" HD Quad splitting monitor, 12 ball cameras, 16 channel connector & loom) |

| | |
|-------|---|
| 14550 | *15m camera extension harness for tow-behind Airseeder/Multistream (8 camera capacity) |
| 14551 | *15m camera extension harness for tow-behind Airseeder/Multistream (12 camera capacity) |
| 14552 | *15m camera extension harness for tow-behind Airseeder/Multistream (16 camera capacity) |

2.0 Camera Installation Guide

2.1 Camera Loom Fitment

Camera kits are only sold with 4 camera wiring harnesses to allow for various combinations. Shown below is a generic layout for an 8 camera system kit.

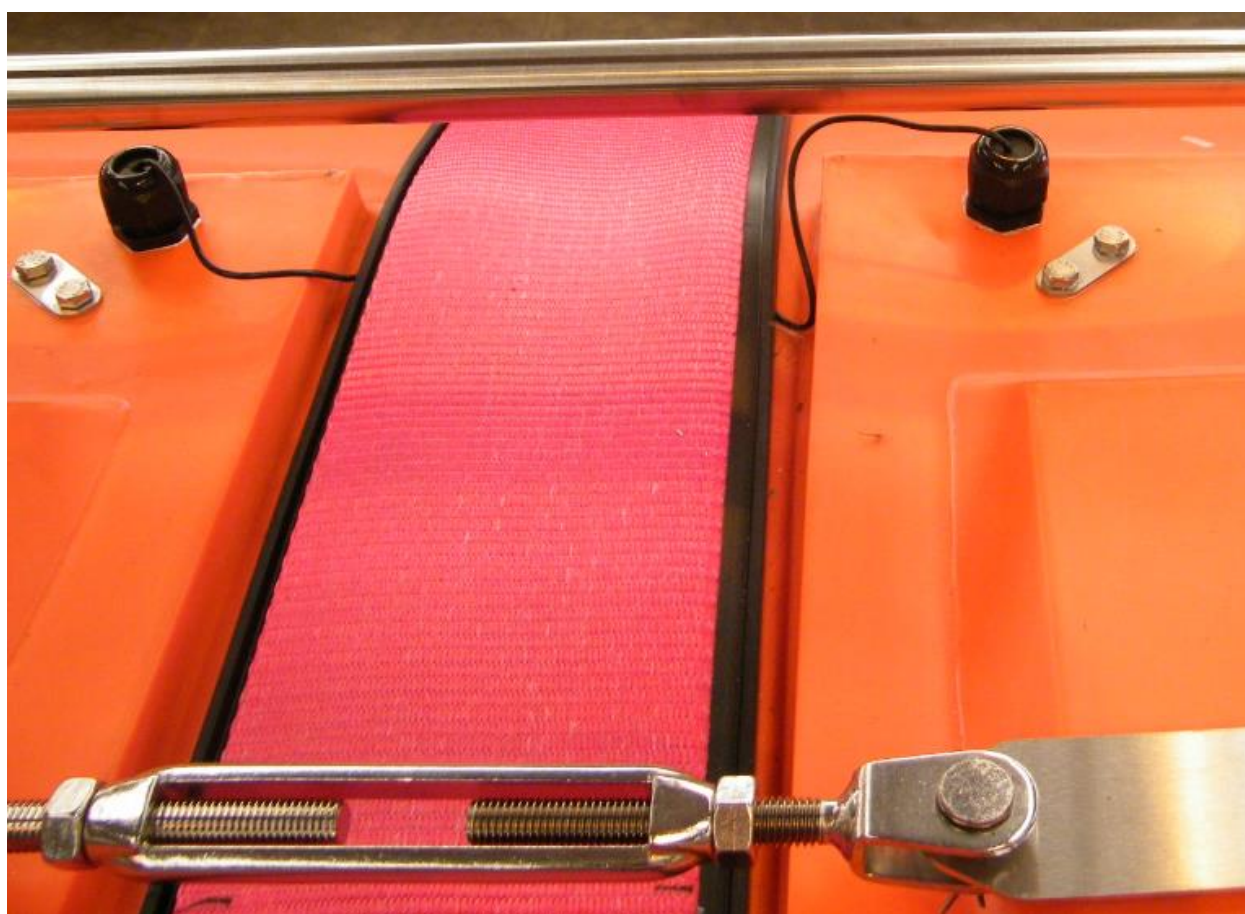


NOTE: 03275, 15429 & 15718 are not interchangeable with older PV harness and 03275 does not suit non-HD monitor (old type)

| Camera Lead | Metering Units | Tanks |
|-------------|-----------------|----------------|
| 1 | Used on Meter 1 | |
| 2 | | Used on Tank 1 |
| 3 | Used on Meter 2 | |
| 4 | | Used on Tank 2 |
| 5 | Used on Meter 3 | |
| 6 | | Used on Tank 3 |
| 7 | Used on Meter 4 | |
| 8 | | Used on Tank 4 |

Camera leads run in pairs (1&3, 2&4, 5&7), odd numbered leads go to metering unit cameras and even go to tank cameras.

The main loom runs through the hose support and along the inner side of the LH drawbar arm, then to the top chassis rail and continuing through the tank cone feet. The loom is secured by cable ties.



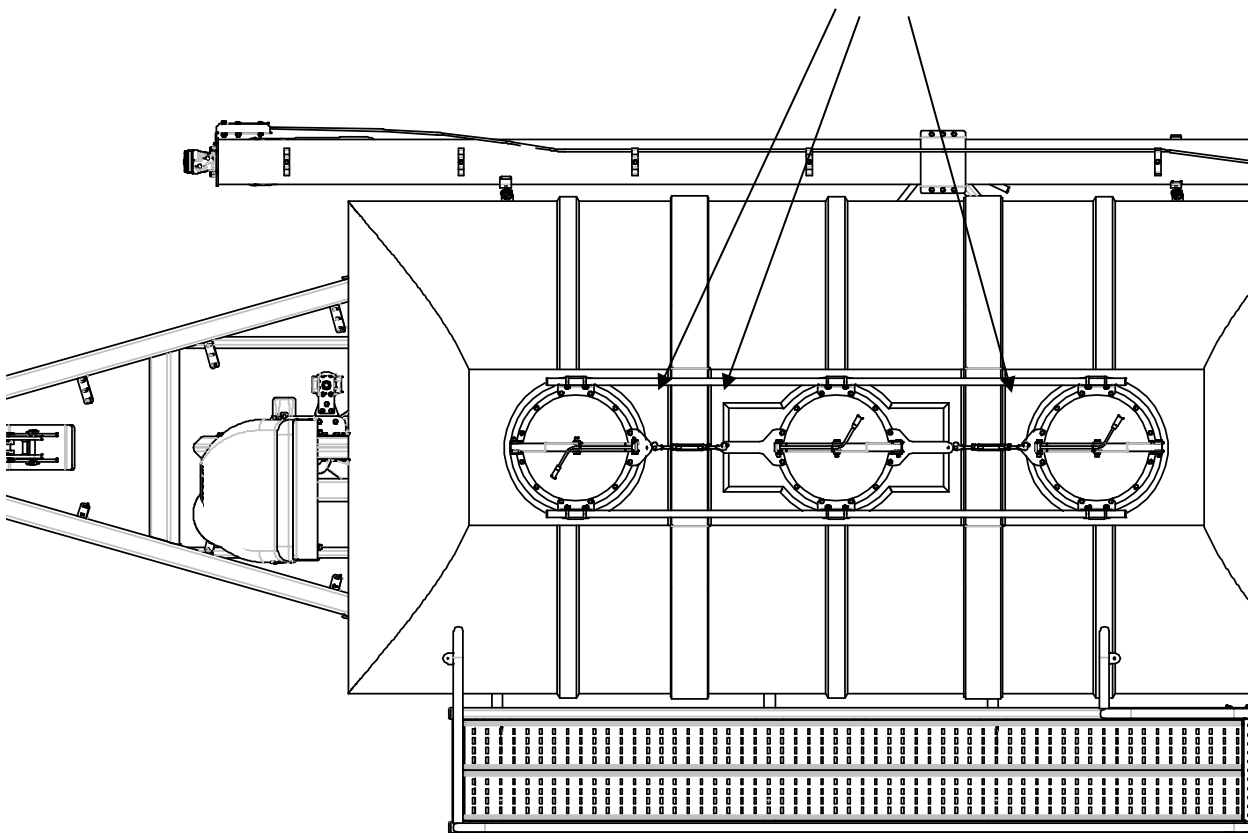
Tank camera leads run under the “T” rubber which is held down by tank straps. The “T” rubber is notched to ensure the camera leads are not damaged.

Leads for the metering unit cameras are run along the edge of the tank cone and secured by cable ties. Ensure there is enough slack in the lead when attaching it to the metering window chain.

Double up any excess cable loom and secure with cable ties ensuring the loom is not crushed.

2.2 Camera Fitment

Install camera near to corner of tank. Make sure that surface inside is flat prior to drilling



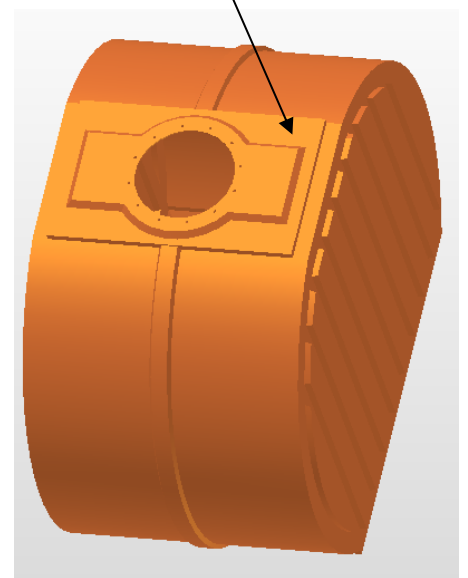
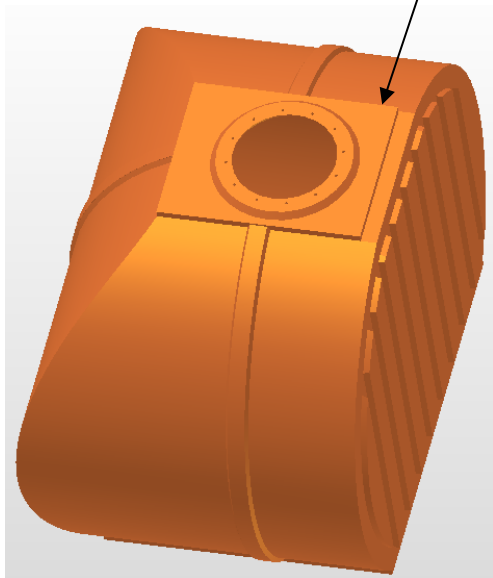
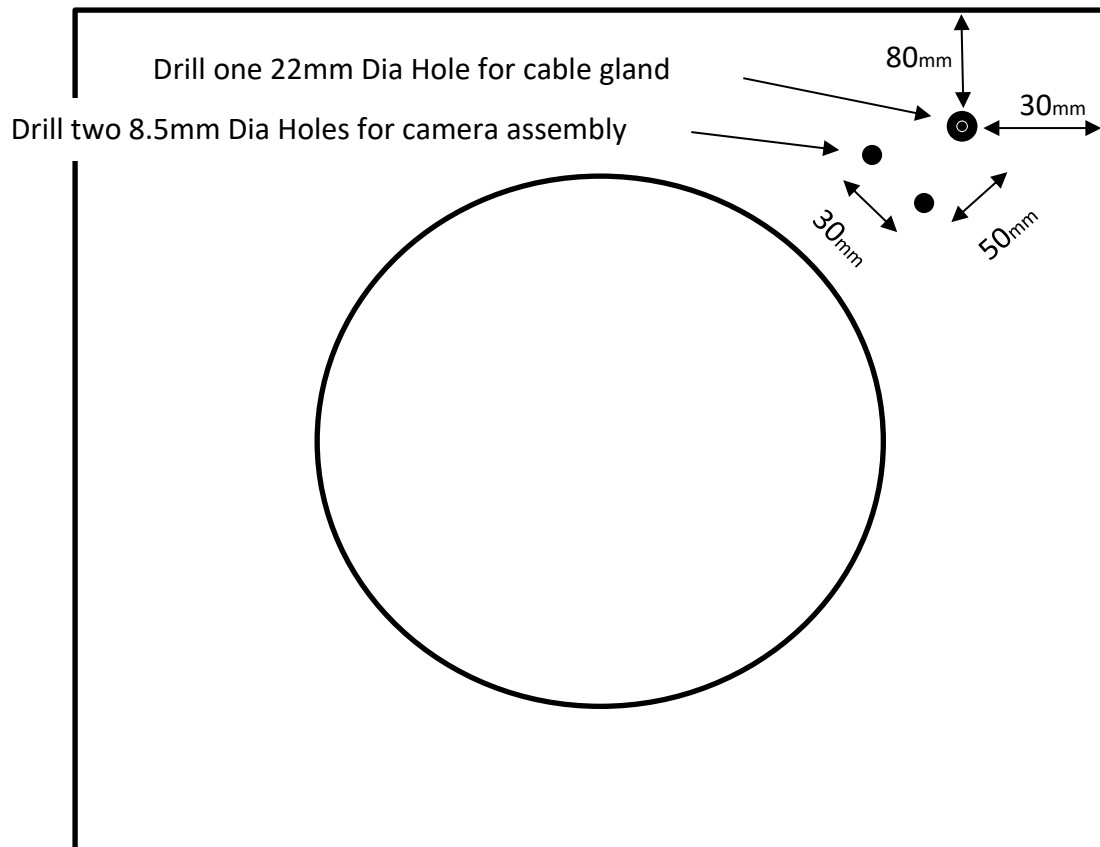
Drill a hole for the cable gland assembly using a 22mm Hole Saw or 22mm Dia drill bit that is not overly sharp and is used at a low speed. If using a new drill bit, use an oil stone to take the sharp edge off the drill bit.



Tap the hole with a 25mm x 1.5 Tap and use a thread sealant such as Part # 18073 Sikaflex 221 when fitting the cable gland assembly.

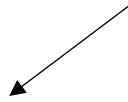
08597 Camera Installation Loan Tool Kit

Comprises: 1 x M25 x 1.5mm Tap
1 x 7/8 (22mm) Hole saw
1 x 8.5mm Drill Bit





CAMERA FITTED INSIDE TANK



CAMERA FITTED TO METERING UNIT



3.0 Lighting Kits



3.1 Multistream Series II Lights

30686 LED Light Assembly Beacon Amber



30674 LED Light Assembly 4x10W Flood



09922 LED Bar Light 8x10W 2 Row CREE



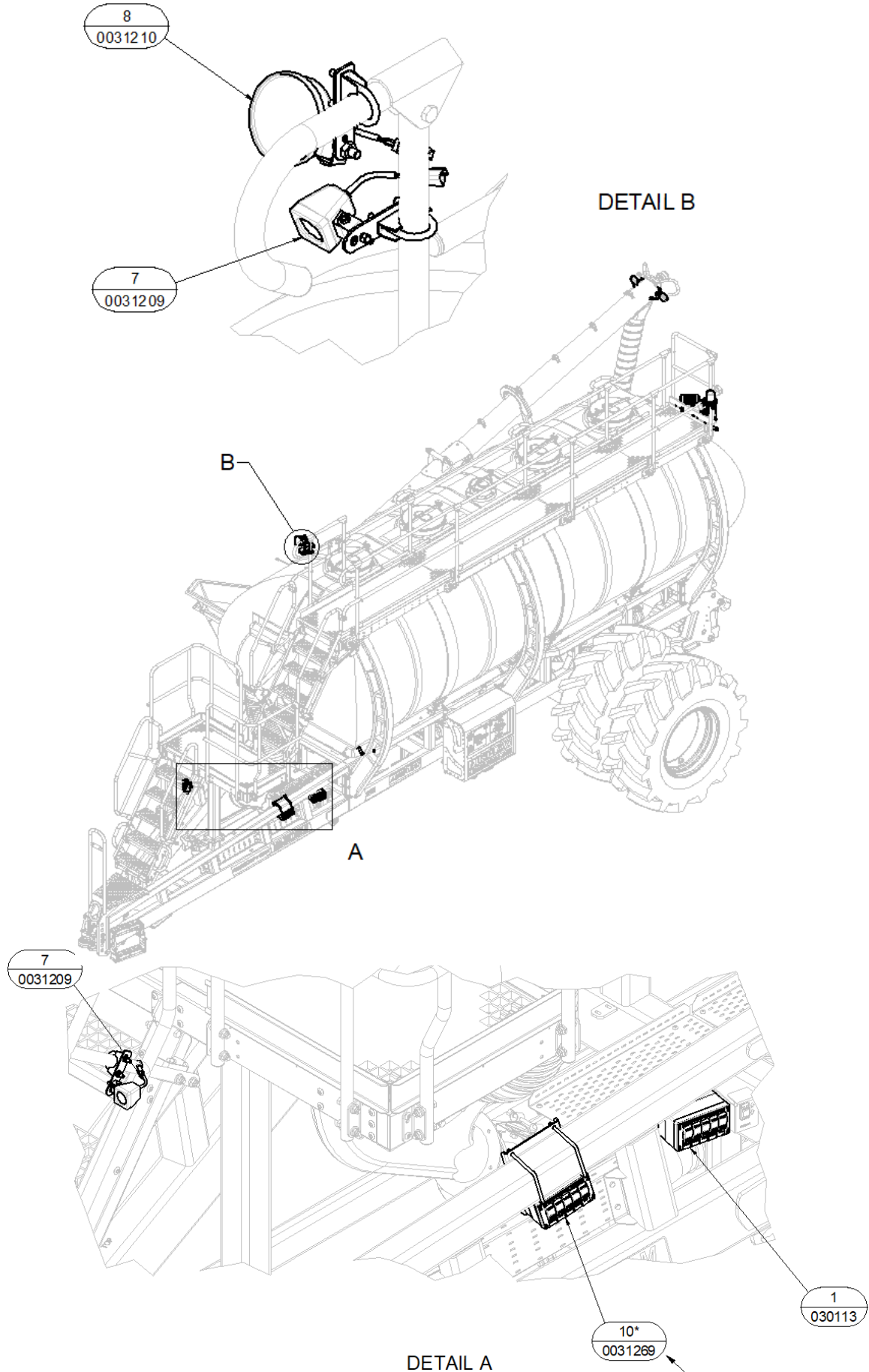
30673 LED Light Assembly 6x3W Flood

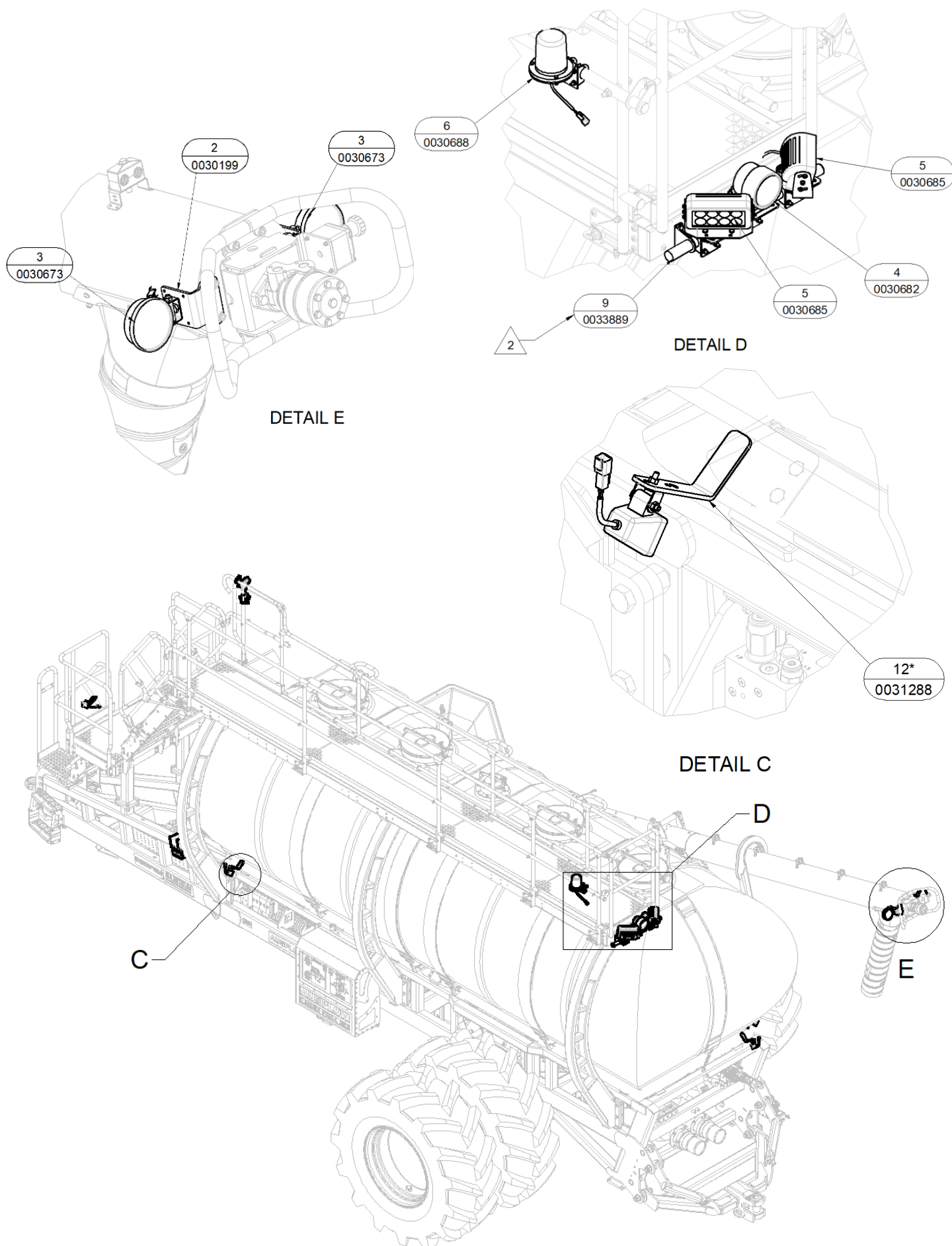


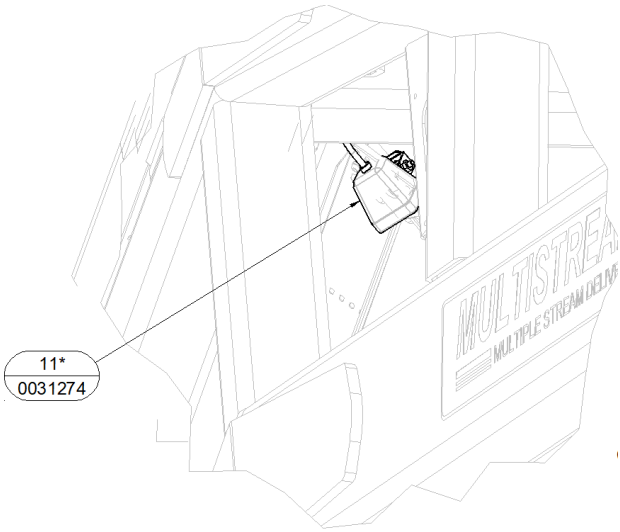
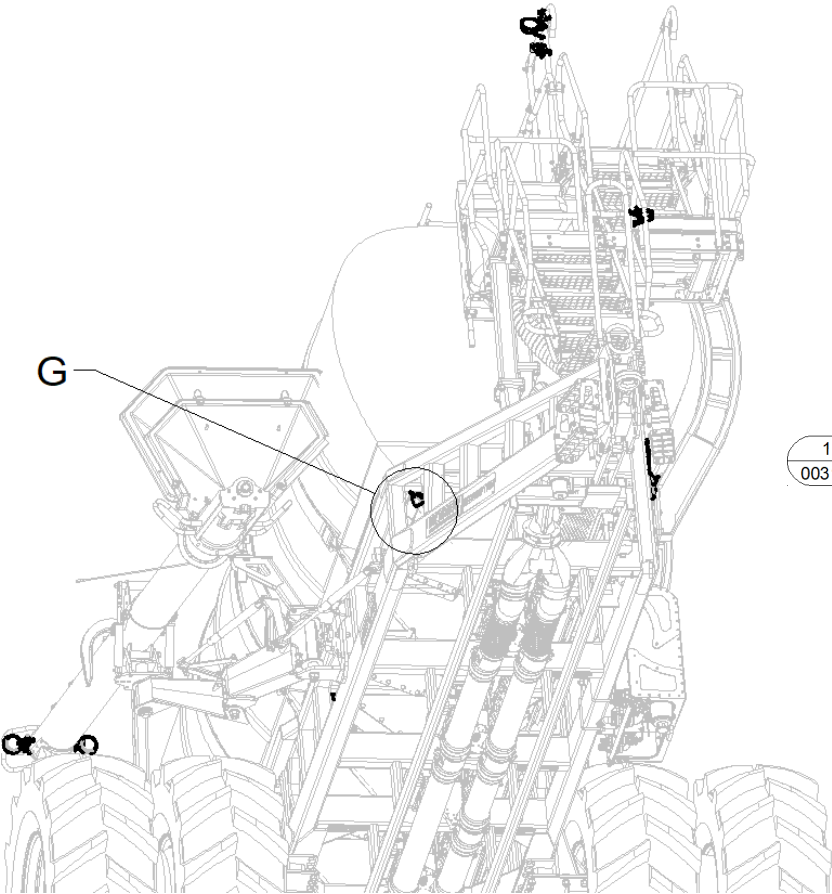
30672 LED Light Assembly 1x10W Flood



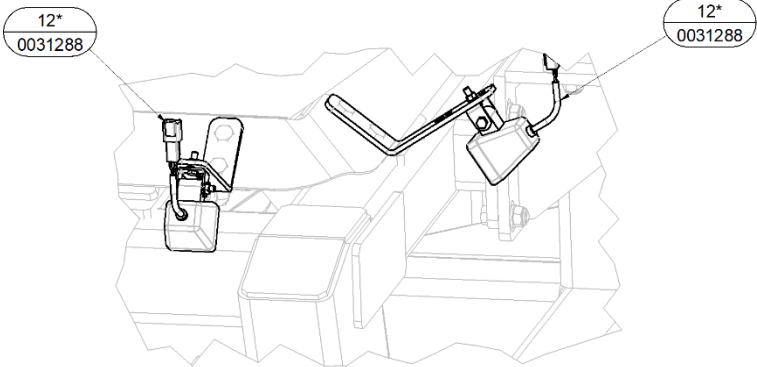
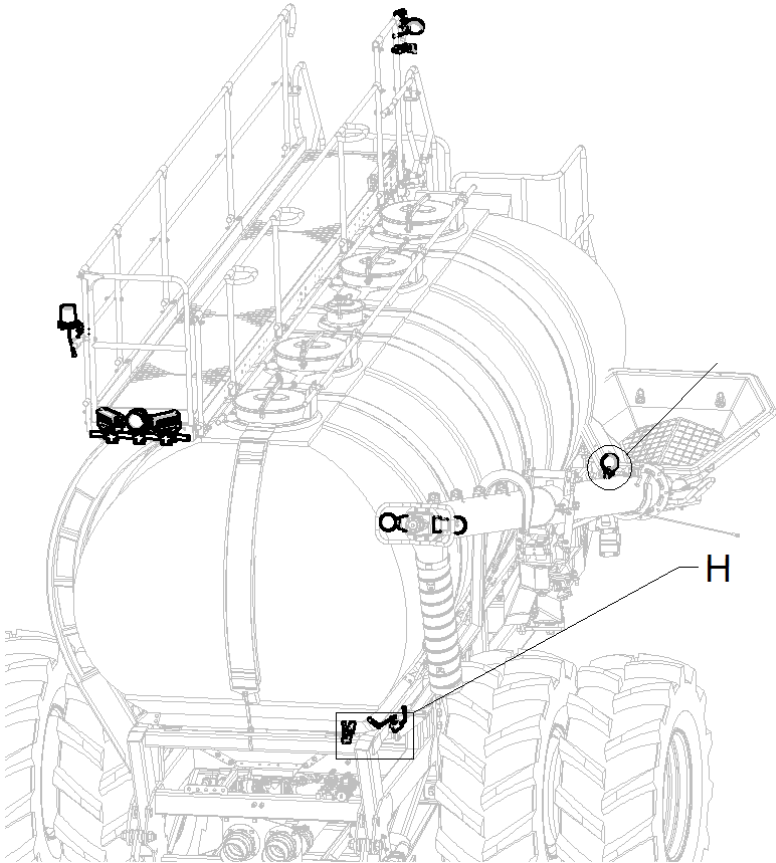
3.2 Multistream Series II Lighting Kit



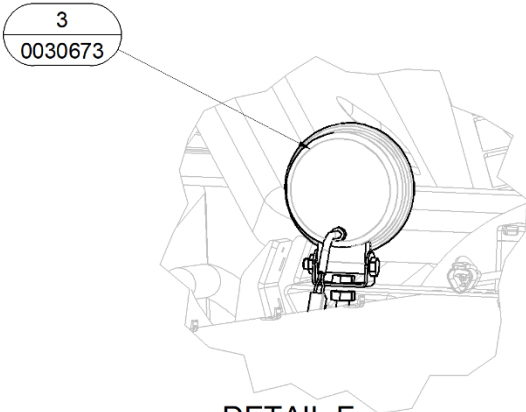




DETAIL G



DETAIL H



DETAIL F

Ausplow Camera & Lighting Spare Parts Manual

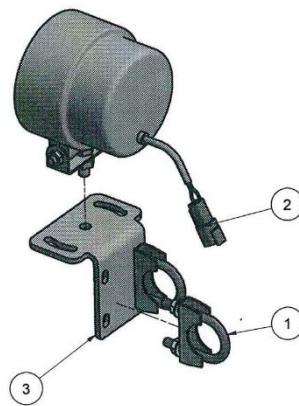
| Item# | Qty | Part# | Description |
|-------|-----|-------|---|
| ALL | 1 | 31157 | MULTISTREAM SERIES II LIGHTING KIT |
| 1 | 1 | 30113 | LIGHT SWITCH BOX ASSY |
| 2 | 2 | 30199 | AUGER &E STOP LIGHT BRACKET |
| 3 | 3 | 30673 | LED FLOOD LIGHT ASY 9 x 3W |
| 4 | 1 | 30682 | IMPLEMENT LIGHT ASSY 40W |
| 5 | 2 | 30685 | IMPLEMENT LIGHT BAR ASSY 80W |
| 6 | 1 | 30688 | BEACON LIGHT ASSY |
| 7 | 2 | 31209 | WALKWAY FLOOD LIGHT 1 x 10W |
| 8 | 1 | 31210 | WALKWAY PLATFORM FLOOD LAMP 9x 3W |
| 9 | 1 | 33889 | COLLAPSIBLE HANDRAIL LIGHTS BAR ASSY |
| 10 | 1 | 31269 | LIGHT SWITCH ASSY – BOLT ON KIT (Series I Only) |
| 11 | 5 | 31274 | TANK SERVICE LIGHT 1 x 10W (for one tank) |
| 12 | 3 | 31288 | CONTROL STATION LIGHT 1 x 10W |

3.3 Multistream Series II Beacon Assy



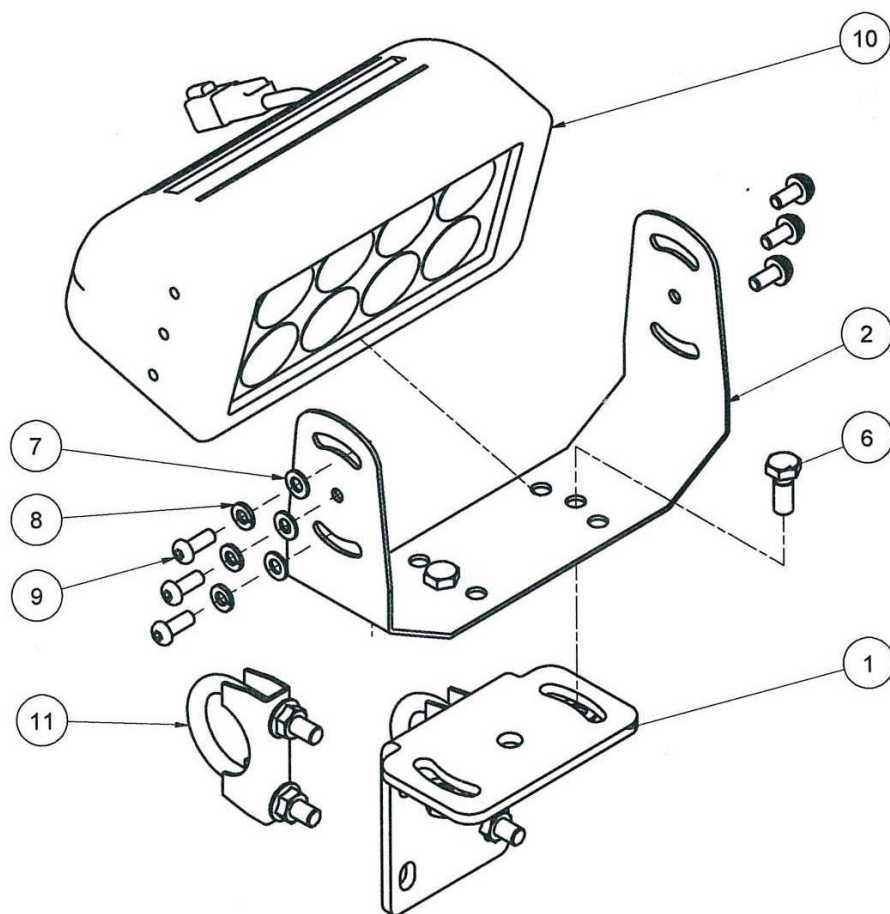
| Item# | Qty | Part# | Description |
|-------|-----|-------|-----------------------------|
| ALL | 1 | 30688 | BEACON ASSEMBLY AMBER LED |
| 1 | 1 | 30686 | LED LIGHT ASSY BEACON AMBER |
| 2 | 1 | 30687 | BEACON MOUNT BRACKET |
| 3 | 2 | 11360 | EXHAUST CLAMP 35MM 1 3/8" |
| 4 | 3 | 09194 | NUT M6 SS316 NYLOC |
| 5 | 3 | 09331 | WASHER FLAT M6 SS316 |
| 6 | 3 | 09381 | SCREW HEX M6X25 SS316 |

3.4 Multistream Series II Light Assy 40W



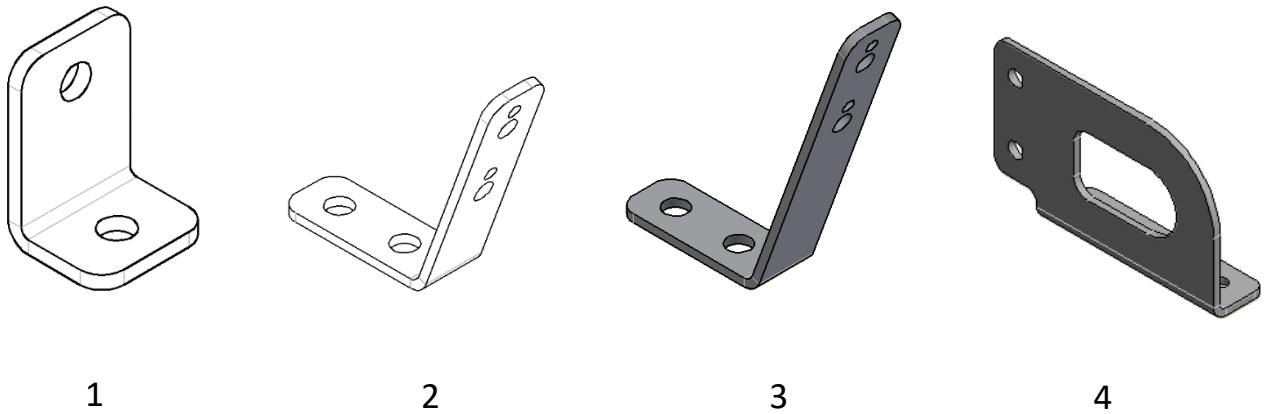
| Item# | Qty | Part# | Description |
|-------|-----|-------|----------------------------|
| ALL | 1 | 30682 | IMPLEMENT LIGHT ASSY 40W |
| 1 | 2 | 11360 | EXHAUST CLAMP 35MM 1 3/8" |
| 2 | 1 | 30674 | LED LIGHT ASSY 4X10W FLOOD |
| 3 | 1 | 30680 | FLOOD LIGHT BAR BRACKET |

3.5 Multistream Series II Light Bar Assy

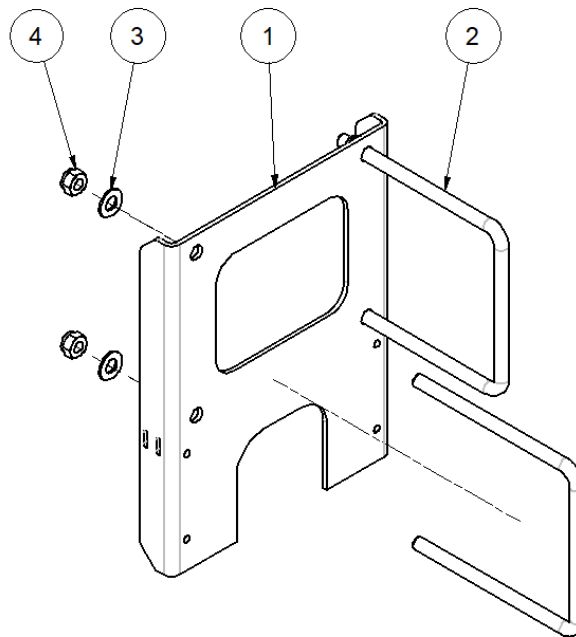


| Item# | Qty | Part# | Description |
|-------|-----|-------|----------------------------------|
| ALL | 1 | 30685 | IMPLEMENT LIGHT BAR ASSY 80W |
| 1 | 1 | 30680 | FLOOD LIGHT BAR BRACKET |
| 2 | 1 | 30684 | BRACKET 8X10W 2 ROW LIGHTING KIT |
| 3 | 2 | 09055 | NUT M8 SS316 |
| 4 | 2 | 09105 | WASHER SPRING M8 SS316 |
| 5 | 2 | 09106 | WASHER FLAT M8 SS316 |
| 6 | 2 | 09127 | SCREW HEX M8X20 SS316 |
| 7 | 6 | 09331 | WASHER FLAT M6 SS316 |
| 8 | 6 | 09417 | WASHER SPRING M6 SS316 |
| 9 | 6 | 09877 | SCREW M6X16 BTN SKT HD SS304 |
| 10 | 1 | 09922 | LED BAR LIGHT 8X10W 2 ROW CREE |
| 11 | 2 | 11360 | EXHAUST CLAMP 35MM 1 3/8" |

3.6 Lighting Kit Brackets

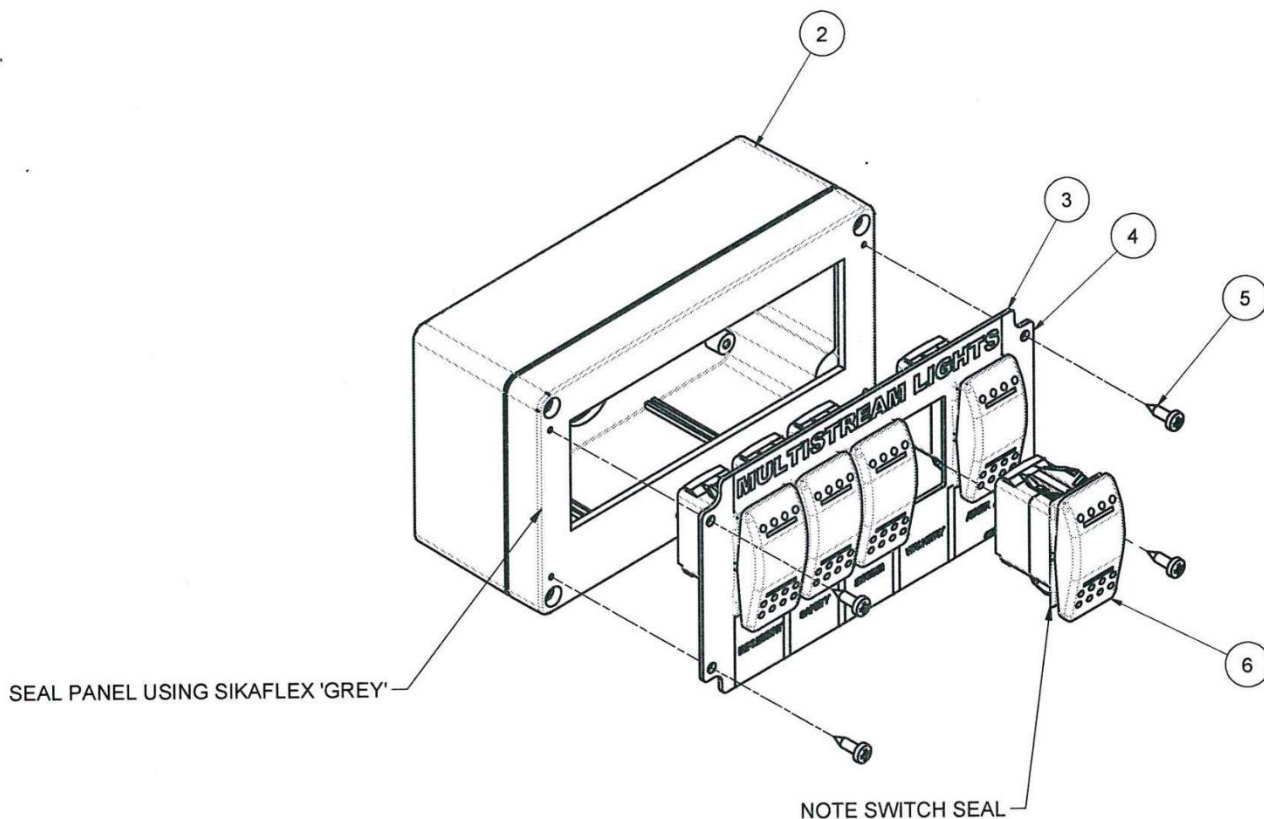


| Item# | Part# | Description |
|-------|-------|--|
| 1 | 30676 | L BRACKET LIGHTING KIT |
| 2 | 30675 | CONE CORNER BRACKET LIGHTING KIT |
| 3 | 35046 | CONE CORNER BRACKET EXTENSION LIGHTING KIT |
| 4 | 30580 | BRACKET POWER CONNECTOR |



| Item# | Part# | Description |
|----------|-------|------------------------------|
| All | 30701 | LIGHT SWITCH BOLT ON BRACKET |
| 1 | 30700 | LIGHT SWITCH BRACKET |
| 2, 3 & 4 | 11489 | U BOLT SET M8 x 101 x 120mm |

3.7 Multistream Series II Light Switch Box Assy



| Item# | Qty | Part# | Description |
|-------|-----|-------|---|
| ALL | 1 | 30113 | LIGHT SWITCH BOX ASSEMBLY SERIES II MULTISTREAM |
| 1 | NS | 29611 | HARNESS SWITCH BOX LIGHTING LOOM SERIES II |
| 2 | 1 | 30114 | ENCLOSURE TRIMMED LIGHT SWITCH BOX SERIES II |
| 3 | 1 | 30115 | SUPPORT PANEL LIGHT SWITCH BOX SERIES II |
| 4 | 1 | 30116 | DECAL FUNCTION LIGHT SWITCH BOX SERIES II |
| 5 | 4 | 09807 | SCREW #6X3/8" PAN HD SELF TAP. PHILLIPS SS304/316 |
| 6 | 5 | 09866 | SWITCH TOGGLE VENTURA II SPST V1DAS00CAZC |

3.8 Multistream Series II Lighting Harness

| Part# | Description |
|-------|---|
| 29611 | HARNESS SWITCH BOX LIGHTING |
| 29613 | HARNESS TRACTOR POWER LIGHTING (Battery to drawbar) |
| 29617 | HARNESS LIGHTING 4 BIN TBT |
| 29619 | HARNESS LIGHTING SPLITTER |
| 30689 | HARNESS LIGHTING SPLITTER M27 & M28000 |
| 30702 | POWER EXTENSION 12m (Across bar for TBH bins) |
| 30691 | POWER EXTENSION 10A x 2m |
| 30692 | POWER EXTENSION 10A x 10m |
| 30588 | WALKWAY LIGHTING EXTENSION |

3.9 Multistream Series II Lighting Kits

| Part# | Description |
|-------|---------------------------------------|
| 16061 | LIGHT KIT 3 BIN BASE LIGHTING KIT TBT |
| 16062 | LIGHT KIT 4 BIN BASE LIGHTING KIT TBT |
| 16063 | LIGHT KIT 5 BIN BASE LIGHTING KIT TBT |
| 16064 | LIGHT KIT 6 BIN BASE LIGHTING KIT TBT |
| 16065 | LIGHT KIT 7 BIN BASE LIGHTING KIT TBT |
| 16066 | LIGHT KIT 3 BIN BASE LIGHTING KIT TBH |
| 16067 | LIGHT KIT 4 BIN BASE LIGHTING KIT TBH |
| 16068 | LIGHT KIT 5 BIN BASE LIGHTING KIT TBH |

This page is intentionally left blank