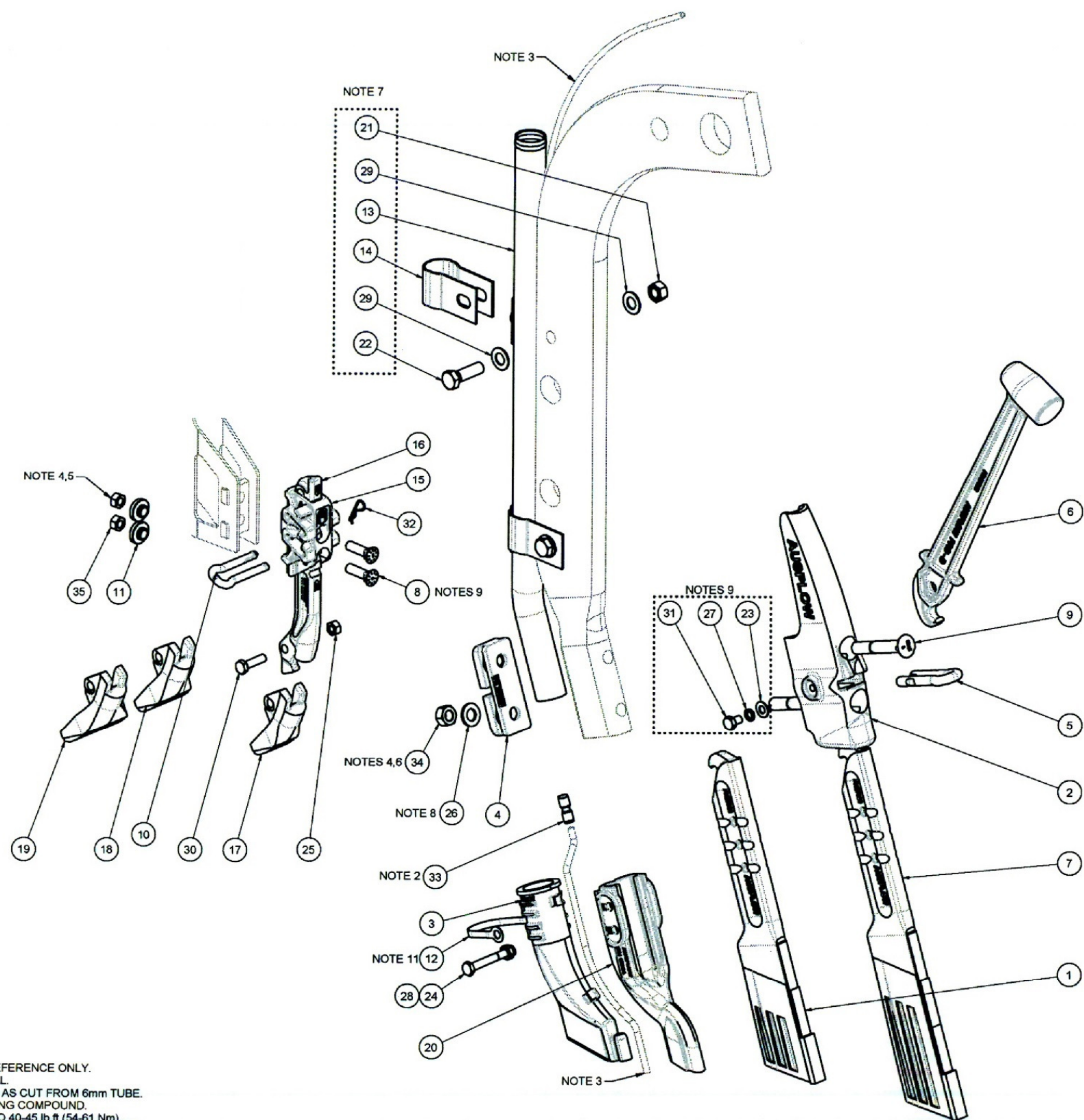


Pro-D Tine Parts General Assembly Drawing



NOTES:
1. GREY LINES ARE REFERENCE ONLY.
2. LIQUID KIT OPTIONAL.
3. PART OF LIQUID KIT AS CUT FROM 6mm TUBE.
4. USE THREAD LOCKING COMPOUND.
5. 3/8 INCH TIGHTEN TO 40-45 lb.ft (54-61 Nm).
6. 1/2 INCH TIGHTEN TO 100-110 lb.ft (135-149 Nm).
7. V2.0 TINE ADDITIONAL COMPONENTS REQUIRED.
8. OPTIONAL WASHER IF NOT USING FERT SHIELD.
9. SAFETY FASTENERS
10. FOR ASSEMBLY INSTRUCTIONS SEE AUSPLOW.COM.AU.
11. FIT RETAINING STRAP AND FORM BY HAND.



| Item | Qty | Part No | Description |
|------|-----|---------|---|
| 1 | 1 | 026992 | PRO D GROUND TOOLS BLADE 5-7 ASSY |
| 2 | 1 | 026995 | BLADE ADAPTOR |
| 3 | 1 | 027014 | PRO-D FERTILISER BOOT |
| 4 | 1 | 027018 | PRO-D FERTILISER SHIELD ADAPTER |
| 5 | 1 | 027055 | PRO D RETAINING U-PIN 10 mm |
| 6 | 1 | 027056 | PRO-D REMOVAL TOOL |
| 7 | 1 | 027059 | PRO D GROUND TOOLS BLADE 7-9 ASSY |
| 8 | 2 | 027101 | PLOW BOLT 3/8-16 UNC 1.375" ALLOY STEEL |
| 9 | 2 | 027110 | 1/2" UNC x 3 1/8" GR 8 DOUBLE NIB NECK BOLT |
| 10 | 1 | 027136 | PRO-D RETAINING U-PIN 8 mm |
| 11 | 2 | 027148 | PRO-D CLOSING TOOL WASHER |
| 12 | 1 | 027520 | FERTILISER BOOT RETAINING STRAP |
| 13 | 1 | 11367 | FERTILISER TUBE WELDMENT |
| 14 | 2 | 11369 | CLAMP- FERTILISER TUBE |
| 15 | 1 | 15780 | PRO-D CLOSING TOOL ADAPTER - TAPER LK |
| 16 | 1 | 15787 | PRO-D CLOSING TOOL STEM - TAPER LK |
| 17 | 1 | 15788 | PRO-D CLOSING TOOL TIP 30 mm TUNGSTEN |
| 18 | 1 | 15789 | PRO-D CLOSING TOOL TIP 45 mm TUNGSTEN |
| 19 | 1 | 15790 | PRO-D CLOSING TOOL TIP 60 mm TUNGSTEN |
| 20 | 1 | 15794 | PRO-D FERTILISER SHIELD |
| 21 | 2 | 9009 | NUT M12 C8 ZP CONELOCK |
| 22 | 2 | 9011 | SCREW HEX M12x40 C8.8 ZP |
| 23 | 1 | 9017 | WASHER-FLAT M08 ZP |
| 24 | 1 | 9018 | BOLT- M8 x 60 |
| 25 | 1 | 9019 | HEX CONELOCK NUT-M8-G8-ZP |
| 26 | 2 | 9031 | WASHER - FLAT - M12 H/T ZP |
| 27 | 1 | 9066 | WASHER-SPRING M08 ZP |
| 28 | 1 | 9080 | HEX NUT-M8-NYLOCK - C8 - ZP |
| 29 | 4 | 9108 | WASHER FLAT - M12 - SS 316 |
| 30 | 1 | 9485 | SCREW HEX HEAD M8x30 C8.8 ZP |
| 31 | 1 | 9733 | SCREW HEX M8 x 12 G8.8 ZP |
| 32 | 1 | 9734 | R-CLIP DIA 1.6 mm WIRE x 33 LONG |
| 33 | 1 | 9735 | STRAIGHT COUPLING 6 mm TO 6 mm PUSH ON |
| 34 | 2 | 9763 | HEX CONELOCK NUT UNC 1/2-13 GR8 ZP |
| 35 | 2 | 9764 | HEX CONELOCK NUT UNC 3/8-16 GR8 ZP |

SYSTEM OF GROUND
ENGAGING TOOLS



Patent Pending

AUSPLOW Pty Ltd

PH: 08 9417 8877

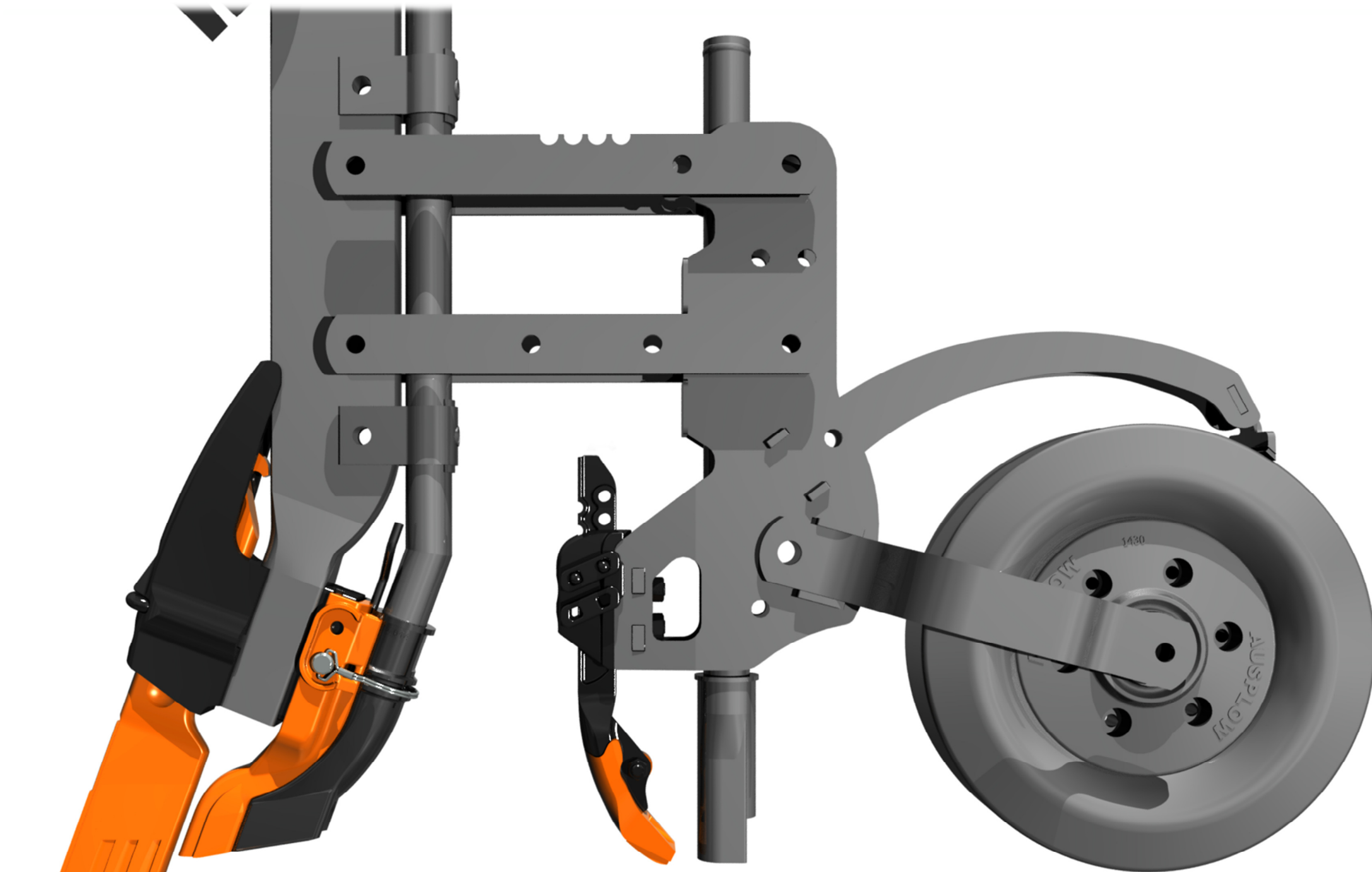
TINE ASSEMBLY - DBS

PRO-D

PARTS G.A.

Rev. 2.1

Pro-D Tine Parts General Assembly Drawing



SYSTEM OF GROUND
ENGAGING TOOLS

FOR **DBS**™

Patent Pending

AUSPLOW