

AUSPLOW FARMING SYSTEMS

6 Davison Road, Jandakot 6164 PO Box 5010, South Lake 6964 Western Australia
Ph: (61 8) 9417 8877 Fax: (61 8) 9417 8878
e-mail: ausplow@ausplow.com.au

PARTS BULLETIN No. 6-11 **SERVICE BULLETIN No. 3-11**

06-12-11

Subject: AUSPLOW COULTER UNITS - HUB & STUD CHANGE

A new design Coulter Assembly was released during the 2009 season. The change was centred on a new hub assembly to carry the coulter disc. Bearings and seals are installed in the hub and the disc is carried on a spigoted flange with studs and nuts to retain it.

The hub was designed to use M12 Standard Thread (1.75) Studs, with a 13mm knurl diameter, which were available at that time from local suppliers.

All Coulter units supplied for the 2009 season were manufactured with these studs and Conelock Nuts.

The original stud became unavailable during production for the 2010 season and we were forced to attempt local manufacture. This was not successful as the studs became very expensive and there were major difficulties in controlling the knurl dimensions.

Our only alternative was to change to a new stud with guaranteed supply availability. The most secure supply area was automotive wheel studs but this introduced two significant changes. Firstly the thread pitch is Fine (M12 x 1.5), and secondly the knurl diameter is larger (14.7mm).

Some coulter units were made with the new stud in 2010, as were all units made in 2011. All new studs are used with plain M12 x 1.5 Fine Thread Nuts and Spring Washers.

As a result of these changes, the hubs, studs and nuts, are not interchangeable as individual items. Component availability is as listed below;

12025	Coulter Disc Hub	No longer available. Replace with
	AUSEEDER DBS - MULTISTREAM - EASITILL	
	www.ausplow.com.au	

AUSPLOW FARMING SYSTEMS

6 Davison Road, Jandakot 6164 PO Box 5010, South Lake 6964 Western Australia
Ph: (61 8) 9417 8877 Fax: (61 8) 9417 8878
e-mail: ausplow@ausplow.com.au

15319, 5 x 09635 and 5 x 09010.

03679 replace	Wheel Stud M12 x 1.75	Limited stock available. Use to damaged studs in 12025 hub only. Take care when pressing into hub.
09009	Nut - M12 - Conelock	Common part, always in stock.
15319	Hub & Stud Assy	Recommended replacement when a hub is required. Order nuts and washers as required.
14330	Hub	Available. Studs must be pressed in squarely to align with disc holes.
14331	Wheel Stud M12 x 1.5	Available. Fits 14330 Hub only.
09635	Nut - M12 x 1.5 Fine	Available.
09010	Washer - Spring - M12	Common part, always in stock.

Mike Kilroy
Parts Manager

Ray Beacham
Service Manager

AUSEEDER DBS - MULTISTREAM - EASITILL
www.ausplow.com.au

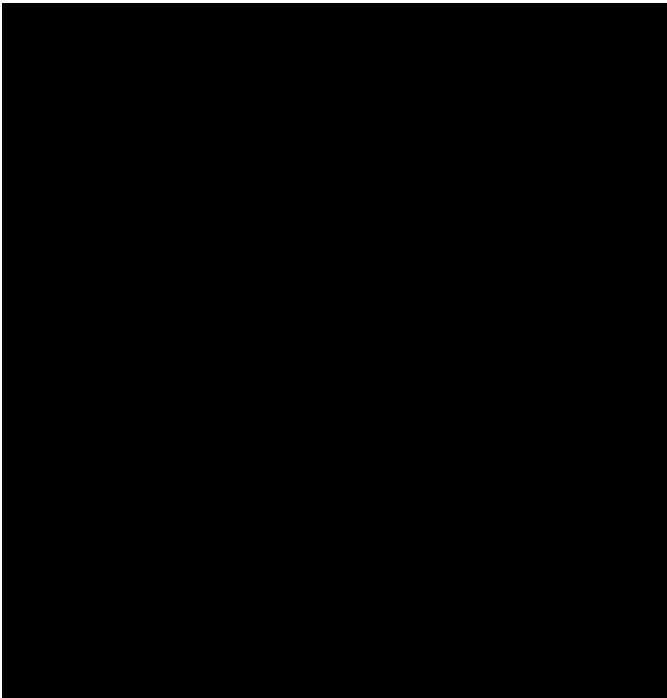
Ausplow Farming Systems P/L as trustee for Ausplow Farming Systems Trust ABN 57 168 859 933 Trading as Ausplow Farming Systems

AUSPLOW FARMING SYSTEMS

6 Davison Road, Jandakot 6164 PO Box 5010, South Lake 6964 Western Australia
Ph: (61 8) 9417 8877 Fax: (61 8) 9417 8878
e-mail: ausplow@ausplow.com.au

ORIGINAL PRODUCTION

2009 / 2010



Part Number 12025

Coulter Disc Hub

(Replaced by P/No 15319

Coulter Hub and Stud Assy)



03679 Wheel Stud - M12 x 1.75 x 37

Used with;

09009 Nut - M12 - Conelock

AUSEEDER DBS - MULTISTREAM - EASITILL

www.ausplow.com.au

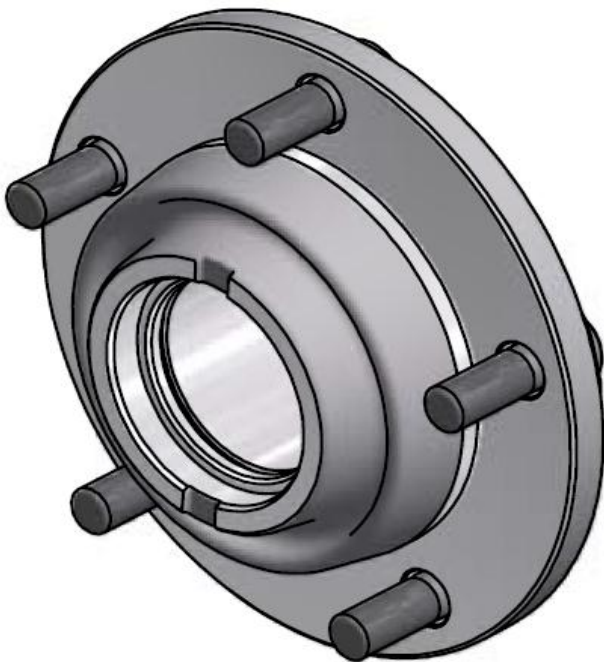
Ausplow Farming Systems P/L as trustee for Ausplow Farming Systems Trust ABN 57 168 859 933 Trading as Ausplow Farming Systems

AUSPLOW FARMING SYSTEMS

6 Davison Road, Jandakot 6164 PO Box 5010, South Lake 6964 Western Australia
Ph: (61 8) 9417 8877 Fax: (61 8) 9417 8878
e-mail: ausplow@ausplow.com.au

CURRENT PRODUCTION

2011 Onwards



Part Number 15319

Coulter Hub & Stud Assy.

(Replaces P/No 12025

Coulter Hub.)

Consists of;

1 x 14330 Hub

5 x 14331 Stud

14331 Wheel Stud - M12 x 1.5 x 40

Used with;

09635 Nut - M12 x 1.5 Fine Thread

09010 Washer - Spring - M12

AUSEEDER DBS - MULTISTREAM - EASITILL

www.ausplow.com.au

Ausplow Farming Systems P/L as trustee for Ausplow Farming Systems Trust ABN 57 168 859 933 Trading as Ausplow Farming Systems