

# AUSPLOW

Australian designed and manufactured



## CAMERA & LIGHTING SPARE PARTS MANUAL

VERSION 2.4

#00944

This page is intentionally left blank

# Contents

<b>Information .....</b>	<b>3</b>
<b>Spare Parts Return Policy .....</b>	<b>4</b>
<b>Procedure for Warranty Claims .....</b>	<b>5</b>
<b>1.0 Camera Kits .....</b>	<b>6</b>
1.1 Camera System Assemblies .....	6
1.2 Camera Assembly .....	9
1.3 Mounting Kit Tank Ball Camera .....	10
1.4 Camera Shroud Assembly .....	12
1.5 Metering Unit Window Assembly .....	14
1.6 Camera Harnesses .....	15
1.7 Camera Harness Extensions .....	16
1.8 Camera Cable Extensions .....	17
1.9 Camera Monitor Assembly .....	18
1.10 Camera Systems .....	19
<b>2.0 Camera Installation Guide .....</b>	<b>20</b>
2.1 Camera Loom Fitment .....	20
2.2 Camera Fitment .....	23
<b>3.0 Lighting Kits .....</b>	<b>26</b>
3.1 Multistream Series II Lights .....	27
3.2 Multistream Series II Lighting Kit .....	28
3.3 Multistream Series II Beacon Assy .....	32
3.4 Multistream Series II Light Assy 40W .....	32
3.5 Multistream Series II Light Bar Assy .....	33
3.6 Lighting Kit Brackets .....	34
3.7 Multistream Series II Light Switch Box Assy .....	35
3.8 Multistream Series II Lighting Harness .....	36
3.9 Multistream Series II Lighting Kits .....	36

## Information

This spare parts manual covers optional components such as Camera and Lighting Kits fitted to the Ausplow Multistreams and Air Seeders.

Throughout this manual some generic acronyms will be used:

ORB:	Obsolete Replaced By,	
NLA:	No Longer Available,	
BSN:	By Serial Number,	
N/A:	Not Available or Not Applicable,	
BSO:	By Special Order (extended lead times may apply),	
NS:	Not Shown,	
NSS:	Not Supplied Separately,	
SS:	Stainless Steel,	
OAH:	Over All Height,	OAL: Over All Length.

Due to the age of some machines and Ausplow's policy of continuous improvement, a number of changes may have been made from the original build specification of a machine.

It is advised that ALL parts be double checked where possible with the more detailed information provided within different areas of this manual.

Identifying features and dimensions are provided to assist with identification of components. Parts that are correctly supplied but don't fit due to the failure of an individual to use the identification methods provided may be subjected to a restocking fee.

Components that have been manufactured to a BSO requirement may not be eligible for return. Ausplow reserves the right to change specification/s of components without notice.

## Spare Parts Return Policy

Ausplow parts may only be returned by Ausplow Dealers under the following conditions:

- Provide a **copy of the Ausplow Sales Order/Tax invoice** which the goods were purchased on with the returned goods.
  - That way we know who they were from, when they were ordered and what Branch is to receive the credit.
- **List the part numbers and quantities** of the returned items.
- Provide a brief description of **why the goods are being returned**,
  - ie: incorrectly supplied, incorrectly ordered etc
  - This helps us identify if the restocking fee is applicable.

6 Davison Road, Cockburn Central WA 6164  
P O Box 5010, South Lake WA 6964  
Ph: (61 8) 9417 8877 Fax: (61 8) 9417 8878  
ausplow@ausplow.com.au  
www.ausplow.com.au

### AUSPLOW FARMING SYSTEMS

AUSEEDER DBS - MULTISTREAM - EASITILL

### TAX INVOICE

Ausplow Farming Systems Pty Ltd  
as Trustee for  
Ausplow Farming Systems Trust  
ABN 57 168 859 933  
Trading As:  
Ausplow Farming Systems

Bill To		Deliver To		Number		
				Date		
				PO Number		
				Cust Code		
				Due Date		
				Page		1

Product Code	Product Description	Qty	Price	Discount	Amount Excl GST
01132	Shank - Auseeder - Hyd Recoil Painted	2.00		20.00	
01287	Blade Assembly DBA29-130 9" Blade	40.00		20.00	
01288	Blade Assembly - DBA27-130 7" Blade	50.00		20.00	
<p>RETURNED &amp; 20% INCORRECTLY ORDERED</p>					

EFT DETAILS: BSB: 086-136 A/C#: 795 293 766			Sub-Total (Ex GST)		
<small>Retention of Title: Title to the goods remains with Ausplow Farming Systems until payment. The goods must be kept separate from other goods received &amp; marked as owned by Ausplow Farming Systems. Any moneys received for the sale of the goods must be held for the benefit of Ausplow Farming Systems &amp; paid to Ausplow Farming Systems until the debt is paid in full. If the debtor fails to pay the debt Ausplow Farming Systems can enter the premises where the goods are located &amp; seize those goods and sell them to recover the amount of debt still owing.</small>			GST		
			Total (Inc GST)		

- The return freight is at the **Dealer's expense**.
- The returned items must be in **resalable condition**.
  - ie: in a clean, unused and undamaged condition
- A standard **20% restocking fee** on the Dealer Net Price applies.



## 1.0 Camera Kits

When fitting cameras, it is important they are fitted in the correct position to optimise the performance of the system.

Refer to the fitting instructions in this manual for recommended fitting and set up procedures.

### 1.1 Camera System Assemblies

Item #	Qty	Part #	Description
All	1	04591	CAMERA SYSTEM 4 CAMERA
	8	01092	CABLE TIE 550 x 13mm
	16	04316	CABLE TIE 290 x 4.8mm
	2.3	10931	CONDUIT SPLIT 16mm ID
	1	13151-2COMBO	MONITOR TANK & METER 1 and 2
	4	13153	CAMERA ASSY (BALL, WATERPROOF)
	2	13838	MOUNTING KIT BALL CAMERA TANK
	2	13849	CAMERA SHROUD ASSEMBLY c/w SCREWS
	2	14435	CABLE EXTENSION CAMERA 2m
	2	15527	CABLE COVER 300mm LG
	2	15429	HARNESS MAIN 4 CAMERA 17m
	2	15720	HARNESS CAMERA DISPLAY 6m

Item #	Qty	Part #	Description
All	1	04580	CAMERA SYSTEM 6 CAMERA
	12	01092	CABLE TIE 550 x 13mm
	18	04316	CABLE TIE 290 x 4.8mm
	2.3	10931	CONDUIT SPLIT 16mm ID
	1	13151-3MET	MONITOR METERS 1,2 & 3
	1	13151-3TANK	MONITOR TANK 1,2 & 3
	6	13153	CAMERA ASSY (BALL, WATERPROOF)
	3	13838	MOUNTING KIT BALL CAMERA TANK
	3	13849	CAMERA SHROUD ASSEMBLY c/w SCREWS
	2	14435	CABLE EXTENSION CAMERA 2m
	1	14225	CABLE EXTENSION CAMERA 5m
	3	15527	CABLE COVER 300mm LG
	2	15429	HARNESS MAIN 4 CAMERA 17m
	2	15720	HARNESS CAMERA DISPLAY 6m

## Ausplow Camera & Lighting Spare Parts Manual

Item #	Qty	Part #	Description
All	1	04592	CAMERA SYSTEM 8 CAMERA
	16	01092	CABLE TIE 550 x 13mm
	24	04316	CABLE TIE 290 x 4.8mm
	2.3	10931	CONDUIT SPLIT 16mm ID
	1	13151-4MET	MONITOR METERS 1,2,3 & 4
	1	13151-4TANK	MONITOR TANK 1,2,3 & 4
	8	13153	CAMERA ASSY (BALL, WATERPROOF)
	4	13838	MOUNTING KIT BALL CAMERA TANK
	4	13849	CAMERA SHROUD ASSEMBLY c/w SCREWS
	3	14435	CABLE EXTENSION CAMERA 2m
	1	14225	CABLE EXTENSION CAMERA 5m
	4	15527	CABLE COVER 300mm LG
	3	15429	HARNESS MAIN 4 CAMERA 17m
	3	15720	HARNESS CAMERA DISPLAY 6m

Item #	Qty	Part #	Description
All	1	04581	CAMERA SYSTEM 10 CAMERA
	20	01092	CABLE TIE 550 x 13mm
	30	04316	CABLE TIE 290 x 4.8mm
	2.3	10931	CONDUIT SPLIT 16mm ID
	1	13151-4MET	MONITOR METERS 1,2,3 & 4
	1	13151-4TANK	MONITOR TANK 1,2,3 & 4
	1	13151-5COMBO	MONITOR TANK & METER 5
	10	13153	CAMERA ASSY (BALL, WATERPROOF)
	5	13838	MOUNTING KIT BALL CAMERA TANK
	5	13849	CAMERA SHROUD ASSEMBLY c/w SCREWS
	4	14435	CABLE EXTENSION CAMERA 2m
	1	14225	CABLE EXTENSION CAMERA 5m
	5	15527	CABLE COVER 300mm LG
	3	15429	HARNESS MAIN 4 CAMERA 17m
	3	15720	HARNESS CAMERA DISPLAY 6m



# Ausplow Camera & Lighting Spare Parts Manual

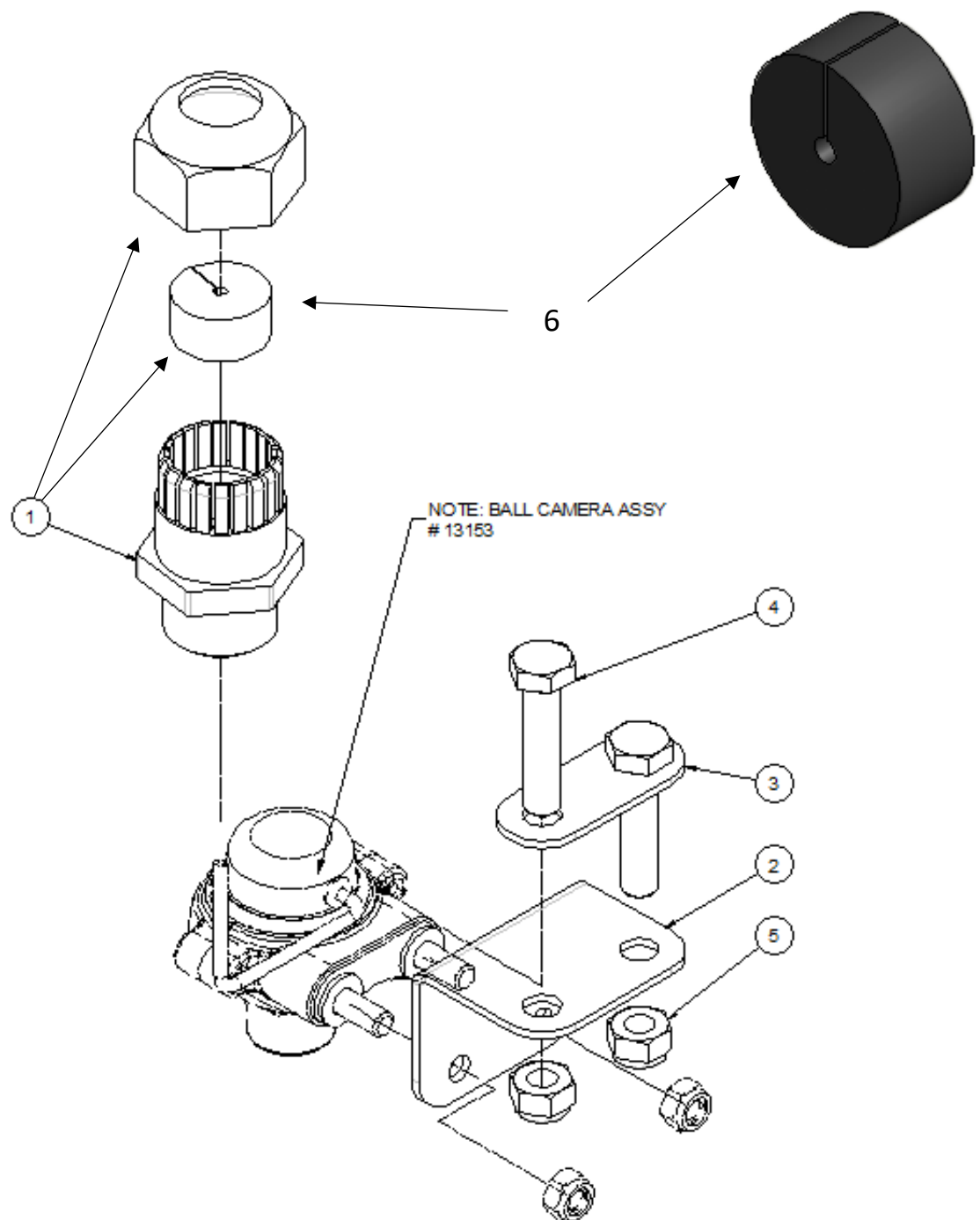
Item #	Qty	Part #	Description
All	1	04593	CAMERA SYSTEM 12 CAMERA
	24	01092	CABLE TIE 550 x 13mm
	36	04316	CABLE TIE 290 x 4.8mm
	2.3	10931	CONDUIT SPLIT 16mm ID
	1	13151-4MET	MONITOR METERS 1,2,3 & 4
	1	13151-4TANK	MONITOR TANK 1,2,3 & 4
	1	13151-6COMBO	MONITOR TANK & METER 5 and 6
	12	13153	CAMERA ASSY (BALL, WATERPROOF)
	6	13838	MOUNTING KIT BALL CAMERA TANK
	6	13849	CAMERA SHROUD ASSEMBLY c/w SCREWS
	5	14435	CABLE EXTENSION CAMERA 2m
	1	14225	CABLE EXTENSION CAMERA 5m
	6	15527	CABLE COVER 300mm LG
	4	15429	HARNESS MAIN 4 CAMERA 17m
	4	15720	HARNESS CAMERA DISPLAY 6m

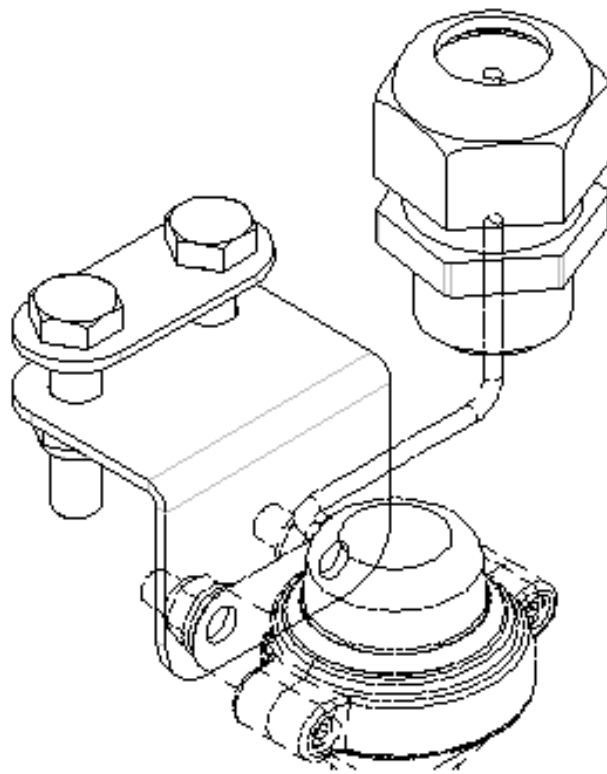
## 1.2 Camera Assembly



Item #	Qty	Part #	Description
All	1	13153	CAMERA ASSEMBLY (BALL WATERPROOF)
	1	13150	CAMERA ASSEMBLY (As Supplied)
	2	09192	BOLT M6 x 20mm SS
	2	09331	WASHER FLAT M6 SS
	2	09194	NUT M6 Nylock SS

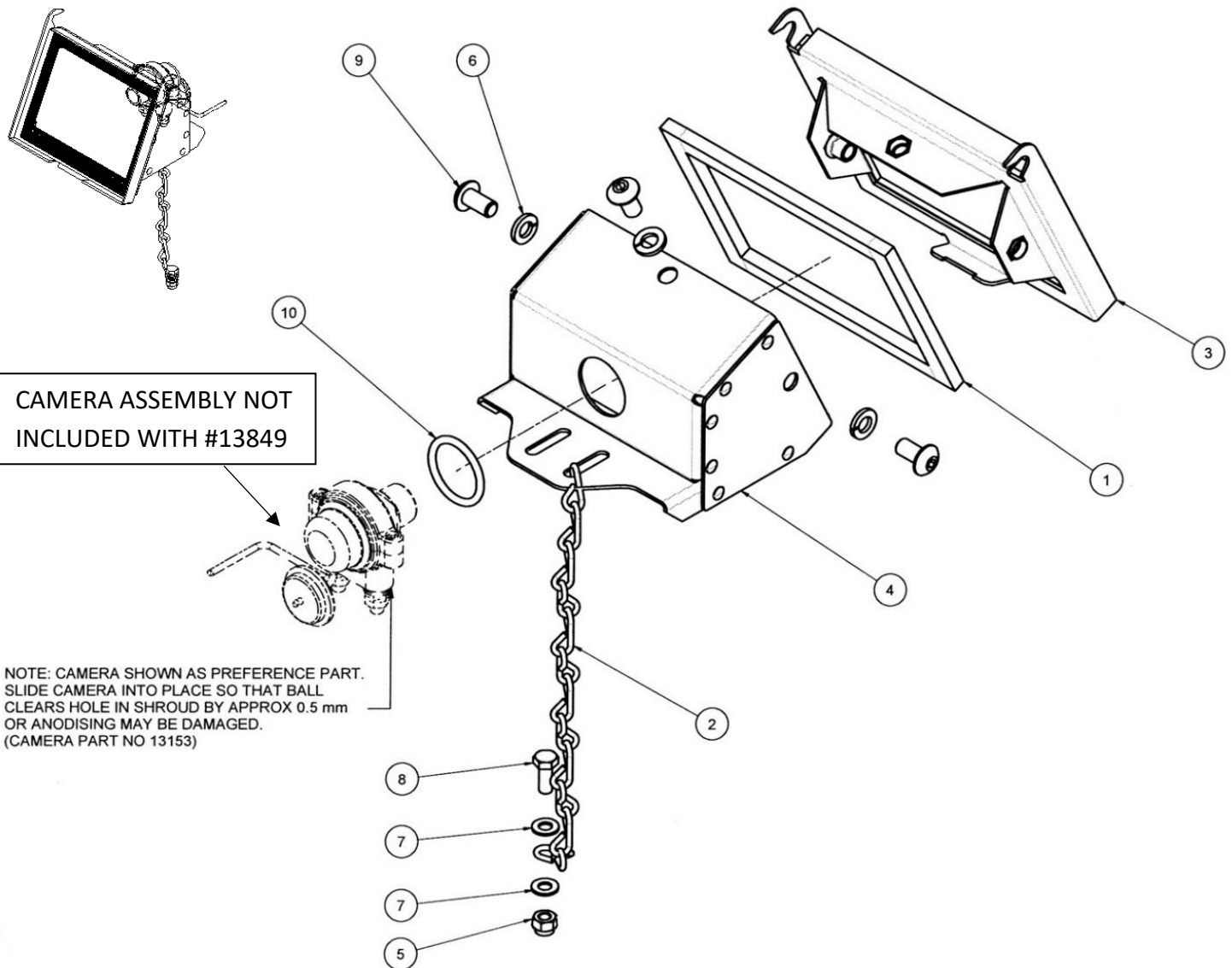
## 1.3 Mounting Kit Tank Ball Camera





Item #	Qty	Part #	Description
All	1	13838	BALL CAMERA TANK MOUNTING KIT
1	1	13152	CAMERA CABLE GLAND ASSY 25mm
2	1	13154	BALL CAMERA TANK MOUNT BRACKET
3	1	13839	BALL CAMERA TANK MOUNT WASHER
4	2	09251	BOLT M8 x 35mm SS
5	2	09277	NUT M8 Nylock SS
6	1	13126	GROMMET CAMERA GLAND REDUCING

## 1.4 Camera Shroud Assembly

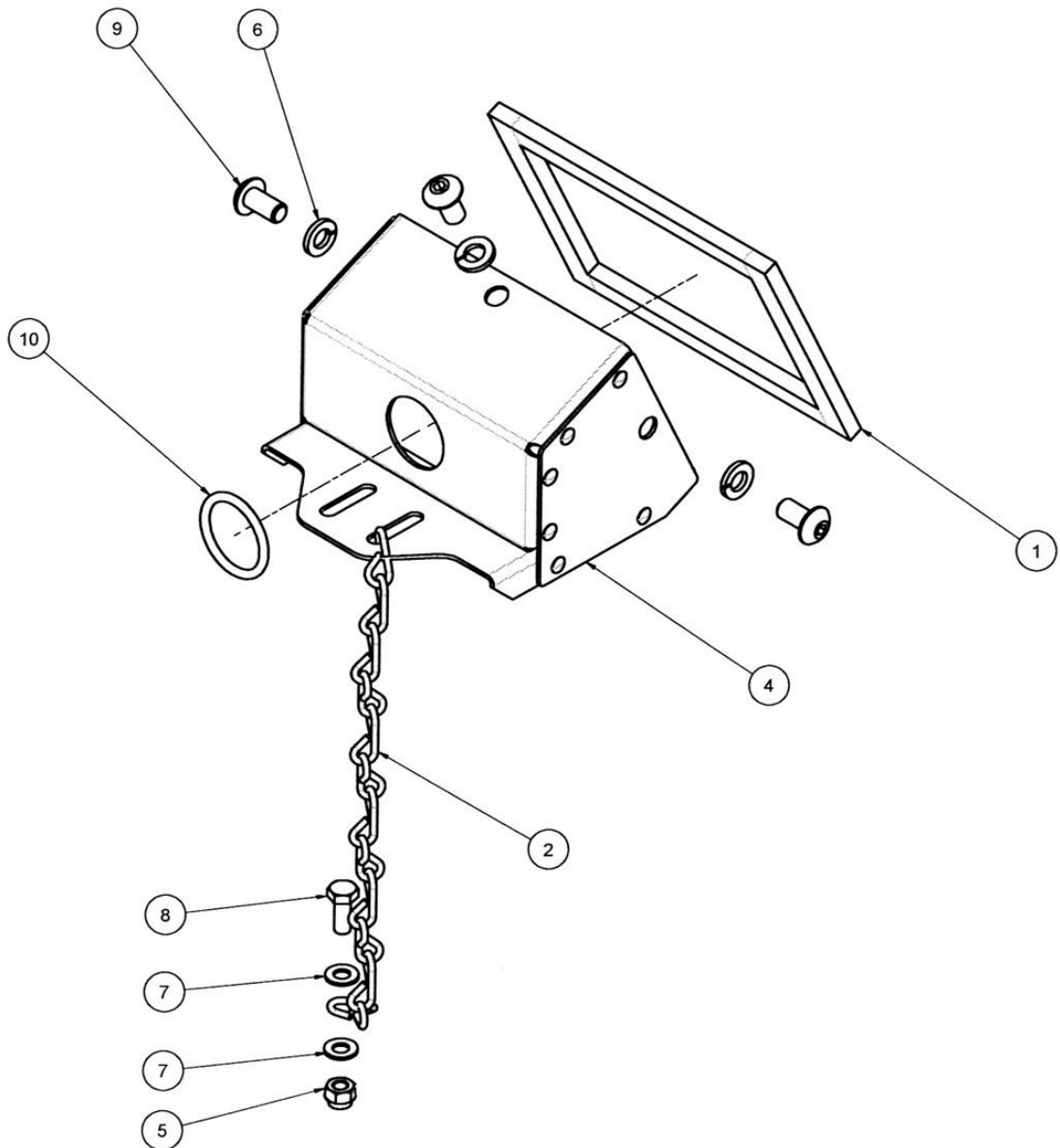


**Metering Unit Camera Shroud Assembly**

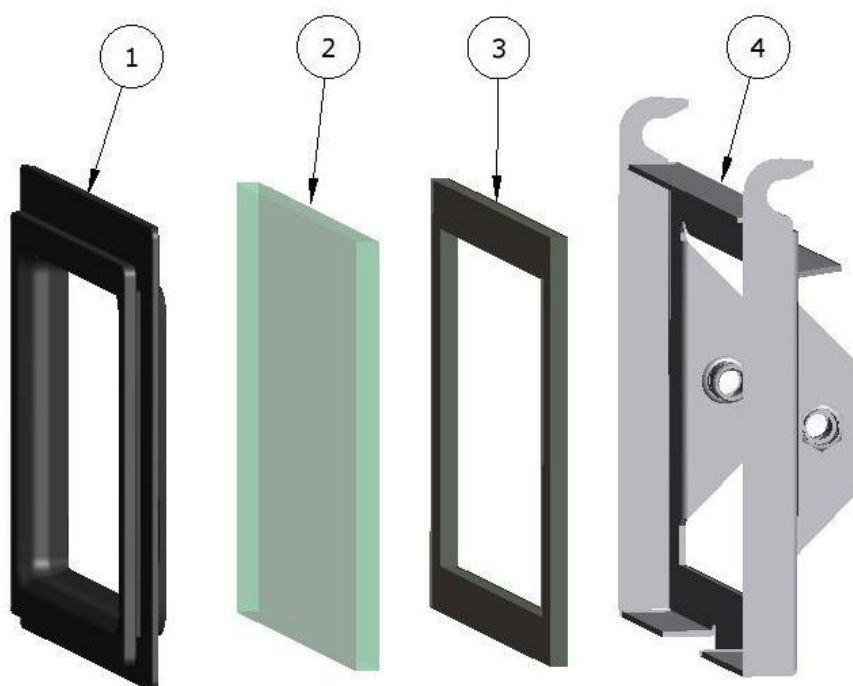
Item #	Qty	Part #	Description
All	1	13849	METERING UNIT CAMERA SHROUD ASSY
1	1	10833	ADHESIVE SEAL 1 SIDED (sold per meter)
2	1	26355	CHAIN 2.5 x 270mm LG SS
3	1	26889	WINDOW FRAME ASSY CAMERA MOUNTING
4	1	13843	BALL CAMERA SHROUD ASSY
5	1	09064	NUT M6 Nylock
6	3	09105	WASHER SPRING M8 SS
7	2	09224	WASHER FLAT M6
8	1	09247	BOLT M6 x 16mm
9	3	09303	SCREW M8 x 16mm BUTTON HEAD SS
10	1	09672	O RING 30 x 3.5mm

**Part # 13800**

**Same as #13849 without item 3**



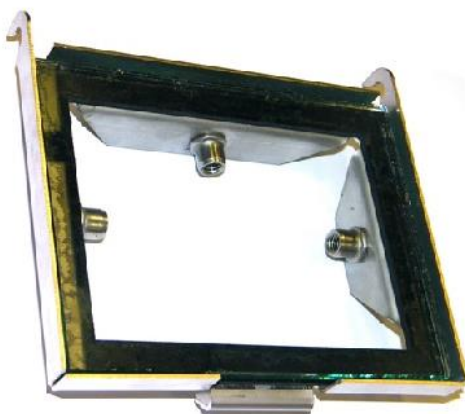
## 1.5 Metering Unit Window Assembly



Item #	Qty	Part #	Description
1	1	26690	SEAL METERING UNIT WINDOW - RUBBER
2	1	06885	GLASS LAMINATED 6mm
3	1	26745	METER UNIT GLASS GASKET – NEOPRENE 3mm
4	1	13841	WINDOW FRAME ASSEMBLY CAMERA
2,3,4	1	26889	WINDOW FRAME ASSY CAMERA MOUNTING

**Part # 26889**

**Items 2, 3 & 4**



## 1.6 Camera Harnesses

### Current Type

New type 4 camera harness #15429 is now used which replaces the 13147, 13148 and 13149 camera harnesses for 4, 8 and 12 camera systems. For example, an 8 camera system will require 2 x 15429.



These run along the drawbar and along the MS chassis connecting to camera cable extensions that run to the top of the bins and to the cameras on the metering units inspection windows.

On Tow Behind machines #15719 – 4 Camera Harness Extension 15m is connected to #15429 camera harness.

### Old Type

Older camera harness shown opposite are **not interchangeable** with the current #15429 camera harness.



Part #	Description
13147	CAMERA HARNESS ASSEMBLY 4 CAMERA
13148	CAMERA HARNESS ASSEMBLY 8 CAMERA
13149	CAMERA HARNESS ASSEMBLY 12 CAMERA



## 1.7 Camera Harness Extensions

### Current Type

New type 4 camera harness 15m extensions #15719 are used when a camera system is fitted to a Tow Behind Multistream bin. They are part of the 14550, 14551 and 14552 camera extension harness kits.



### Old Type

Older camera harness extension #14009 shown below is **not interchangeable** with the current camera harness extension.



1



2

3

Item #	Part #	Description
1	14009	CAMERA BAR EXT LOOM 16.5m – 12 CAMERA CAPACITY
2	14367	DUST PLUG CAMERA HARNESS SCREW IN AMP FITTING
3	14368	DUST PLUG CAMERA HARNESS SCREW ON AMP FITTING CAP

## 1.8 Camera Cable Extensions



Part #	Description
14434	CAMERA EXTENSION CABLE 1m
14435	CAMERA EXTENSION CABLE 2m
14225	CAMERA EXTENSION CABLE 5m
14226	CAMERA EXTENSION CABLE 10m
14227	CAMERA EXTENSION CABLE 15m
14228	CAMERA EXTENSION CABLE 20m
14229	CAMERA EXTENSION CABLE 30m

1.9 Camera Monitor Assembly



1

2

Item #	Part #	Description
All	13151	TOUCH SCREEN MONITOR - QUAD c/w STD LOOM & CAMERA/POWER LEAD 14743
1	15722	TOUCH SCREEN MONITOR - QUAD c/w CAMERA CABLE #14743
2	26452	CAMERA MONITOR POWER LEAD

## 1.10 Camera Systems

- Industrial 7" TFT-LCD Quad Splitting Monitor, Ball Cameras with IR, Connector and wiring looms
- Ball camera tank mount, Stainless steel metering unit camera door and shroud assembly

GRANULAR				
Bin	# Bins	Configuration	Meter Unit Cameras	Tank Cameras
A6000 DB	2	2G	2	2
A9500 BT	2	2G	2	2
A9500 BH*	2	2G	2	2
A11000 BT	3	3G	3	3
A11000 BH*	3	3G	3	3
M6000 DB	3	3G	3	3
M9000 BT	3	3G	3	3
M9000 BH*	3	3G	3	3
M14000 HD BT	3	3G	3	3
M14000 HD BH*	3	3G	3	3
M12000 BT	4	4G	4	4
M12000 BH*	4	4G	4	4
M15000 HD BT	4	4G	4	4
M15000 HD BH*	4	4G	4	4
M18000 HD BT	4	4G	4	4
M19500 HD BT	5	5G	5	5
M22000 HD BT	5	5G	5	5
M24000 HD BT	6	6G	6	6

LIQUID				
Bin	# Bins	Configuration	Meter Unit Cameras	Tank Cameras
M6000 DB	3	2G1L	2	2
M9000 BT	3	2G1L	2	2
M9000 BH*	3	2G1L	2	2
M14000 HD BT	3	2G1L	2	2
M14000 HD BH*	3	2G1L	2	2
M12000 BT	4	3G1L	3	3
M12000 BH*	4	3G1L	3	3
M15000 HD BT	4	3G1L	3	3
M15000 HD BH*	4	3G1L	3	3
M18000 HD BT	4	3G1L	3	3
M19500 HD BT	5	4G1L	4	4
M22000 HD BT	5	4G1L	4	4
M24000 HD BT	6	5G1L	5	5
M27000 HD BT	6	5G1L	5	5
M28000 HD BT	7	6G1L	6	6

Code	Camera Configurations
04591	4 camera system (7" LCD quad splitting monitor, 4 ball cameras, 8 channel connector & loom)
04580	6 camera system (2x7" LCD quad splitting monitor, 6 ball cameras, 8 channel connector & loom)
04592	8 camera system (2x7" LCD quad splitting monitor, 8 ball cameras, 12 channel connector & loom)
04581	10 camera system (3x7" LCD quad splitting monitor, 10 ball cameras, 12 channel connector & loom)
04593	12 camera system (3x7" LCD quad splitting monitor, 12 ball cameras, 16 channel connector & loom)

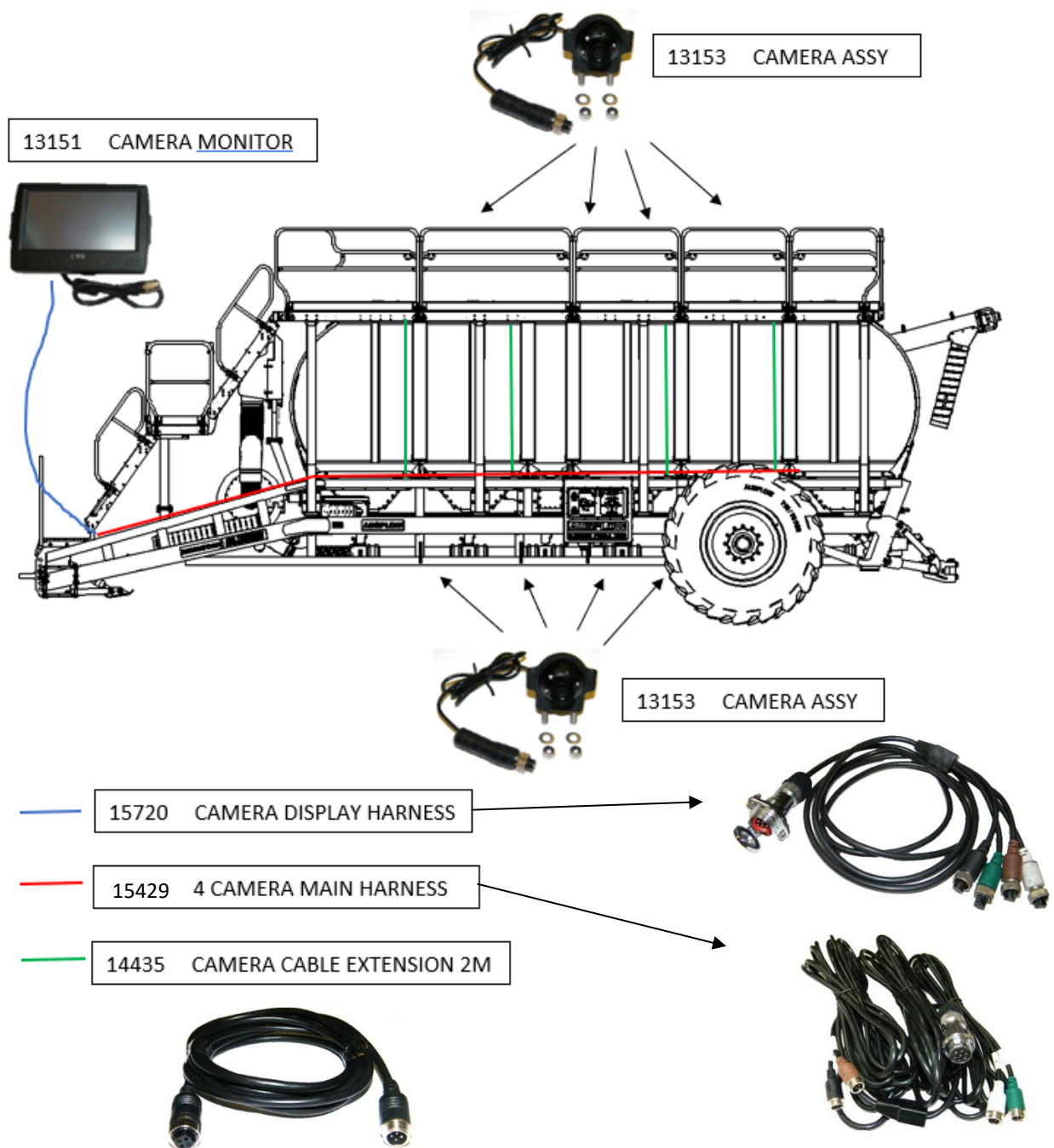
14550	*15m camera extension harness for tow-behind Airseeder/Multistream (8 camera capacity)
14551	*15m camera extension harness for tow-behind Airseeder/Multistream (12 camera capacity)
14552	*15m camera extension harness for tow-behind Airseeder/Multistream (16 camera capacity)

## 2.0 Camera Installation Guide

### 2.1 Camera Loom Fitment

Camera kits are only sold with 4 camera wiring harnesses to allow for various combinations.

Shown below is a generic layout for an 8 camera system kit.



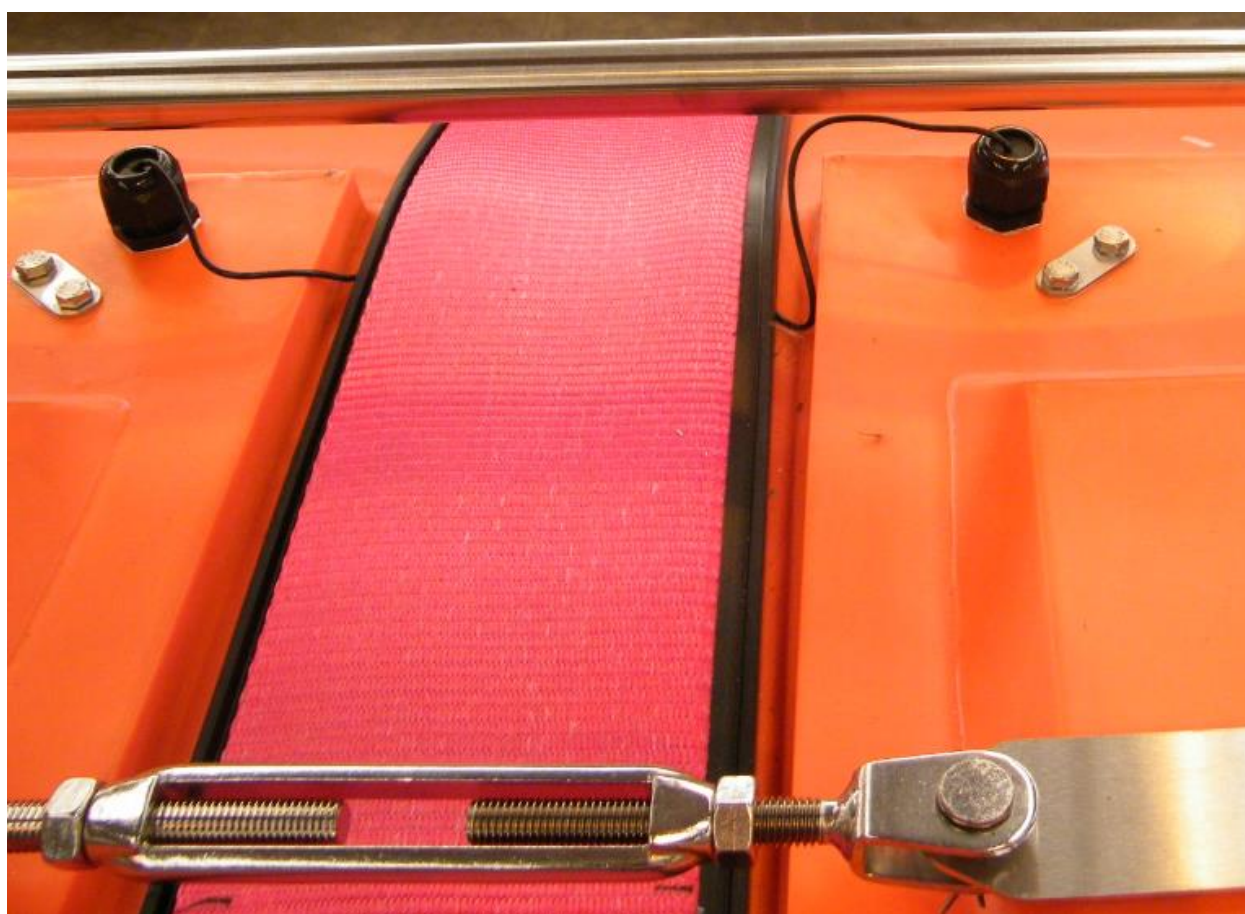
**NOTE:** 15720 & 15429 are not interchangeable with older PV harness



Camera Lead	Metering Units	Tanks
1	Used on Meter 1	
2		Used on Tank 1
3	Used on Meter 2	
4		Used on Tank 2
5	Used on Meter 3	
6		Used on Tank 3
7	Used on Meter 4	
8		Used on Tank 4

Camera leads run in pairs (1&3, 2&4, 5&7), odd numbered leads go to metering unit cameras and even go to tank cameras.

The main loom runs through the hose support and along the inner side of the LH drawbar arm, then to the top chassis rail and continuing through the tank cone feet. The loom is secured by cable ties.



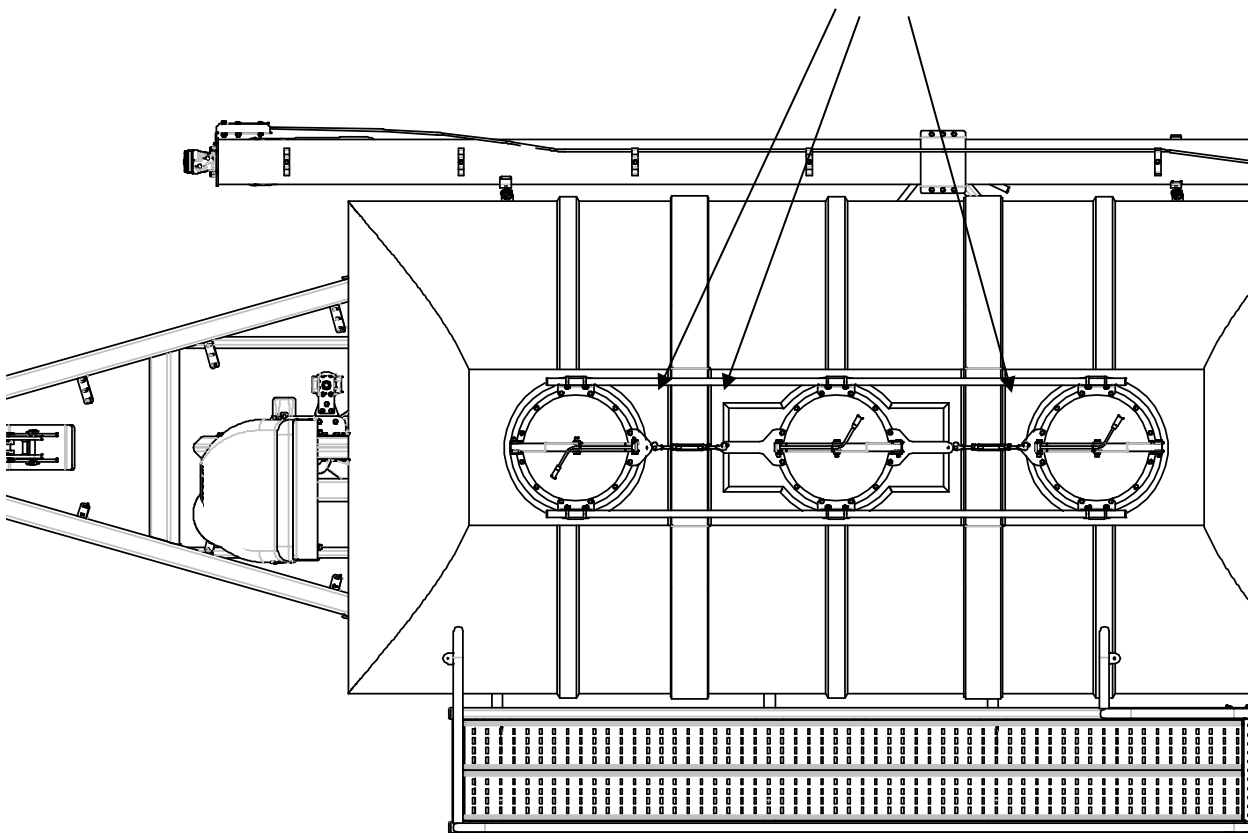
Tank camera leads run under the “T” rubber which is held down by tank straps. The “T” rubber is notched to ensure the camera leads are not damaged.

Leads for the metering unit cameras are run along the edge of the tank cone and secured by cable ties. Ensure there is enough slack in the lead when attaching it to the metering window chain.

Double up any excess cable loom and secure with cable ties ensuring the loom is not crushed.

## 2.2 Camera Fitment

Install camera near to corner of tank. Make sure that surface inside is flat prior to drilling



Drill a hole for the cable gland assembly using a 22mm Hole Saw or 22mm Dia drill bit that is not overly sharp and is used at a low speed. If using a new drill bit, use an oil stone to take the sharp edge off the drill bit.

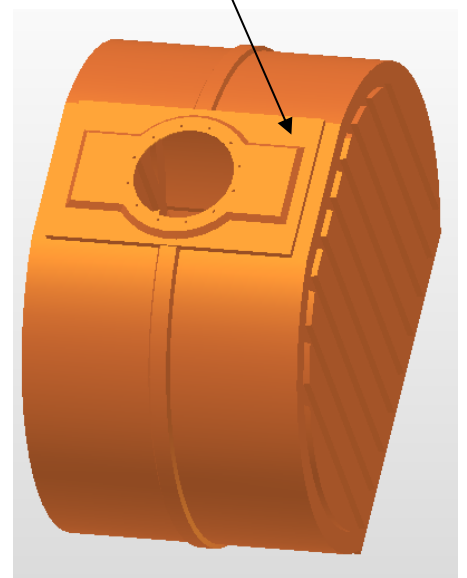
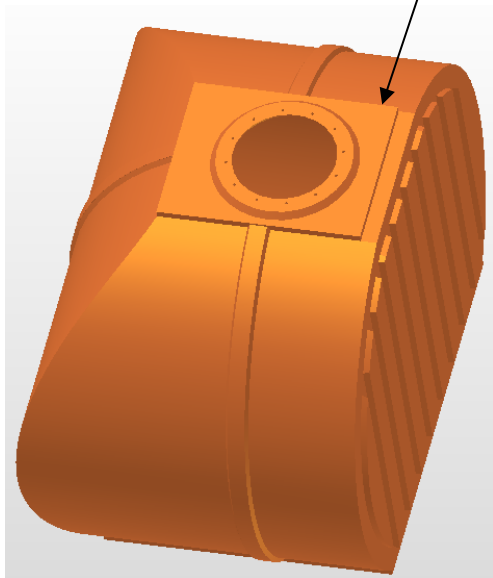
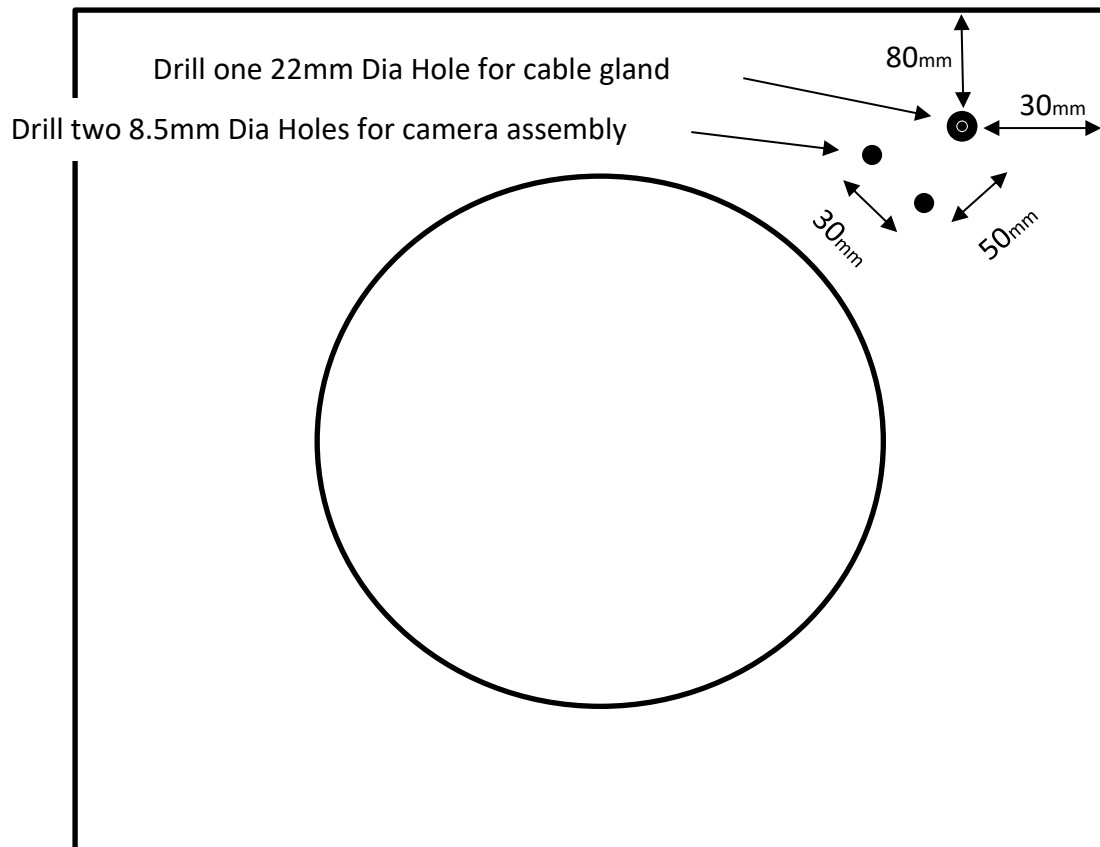


Tap the hole with a 25mm x 1.5 Tap and use a thread sealant such as Part # 18073 Sikaflex 221 when fitting the cable gland assembly.

### # 08597 Camera Installation Loan Tool Kit

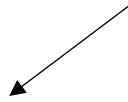
Comprises: 1 x M25 x 1.5mm Tap  
1 x 7/8 (22mm) Hole saw  
1 x 8.5mm Drill Bit







CAMERA FITTED INSIDE TANK



CAMERA FITTED TO METERING UNIT



## 3.0 Lighting Kits



### 3.1 Multistream Series II Lights

30686 LED Light Assembly Beacon Amber



30674 LED Light Assembly 4x10W Flood



09922 LED Bar Light 8x10W 2 Row CREE



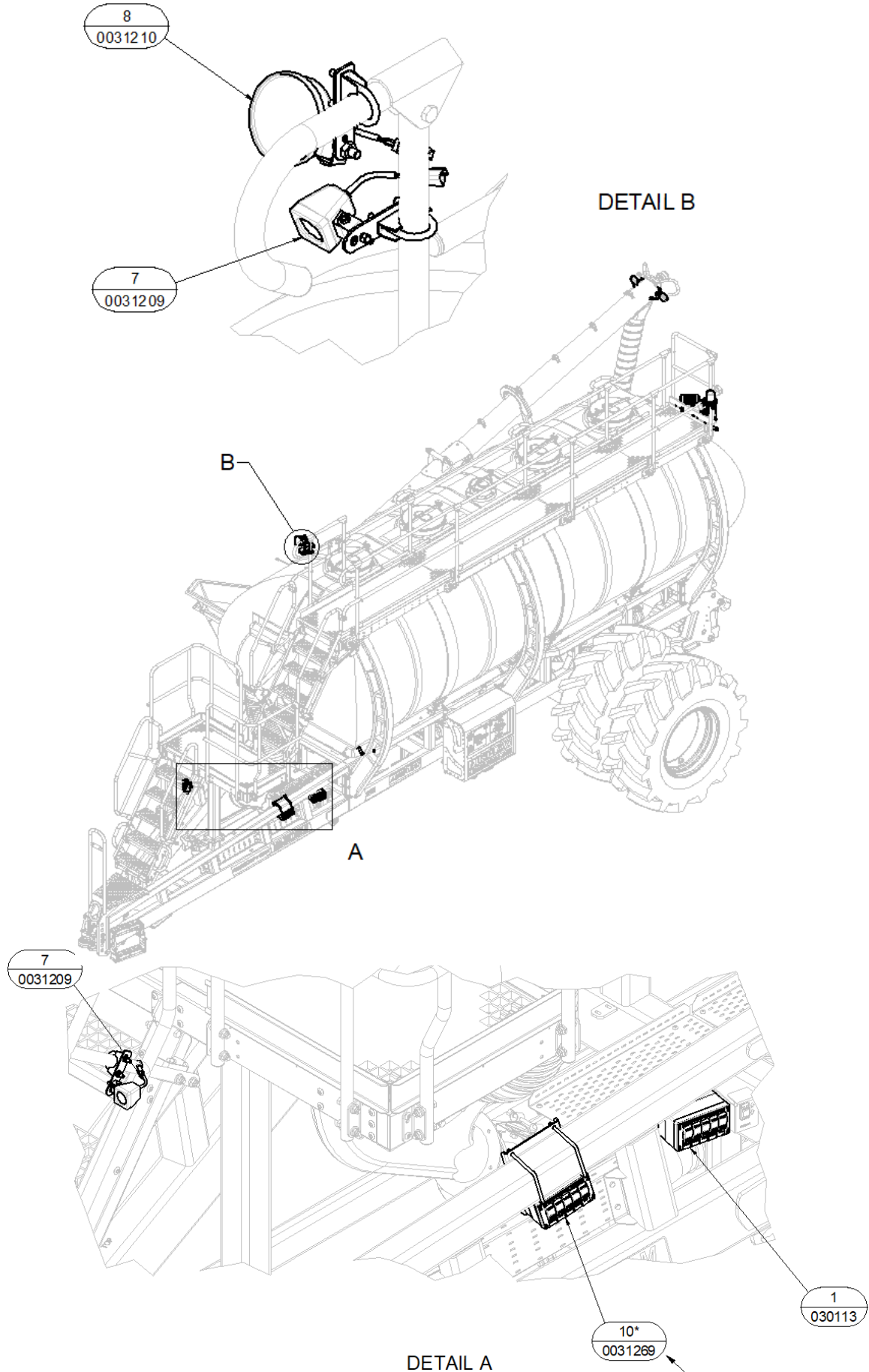
30673 LED Light Assembly 6x3W Flood



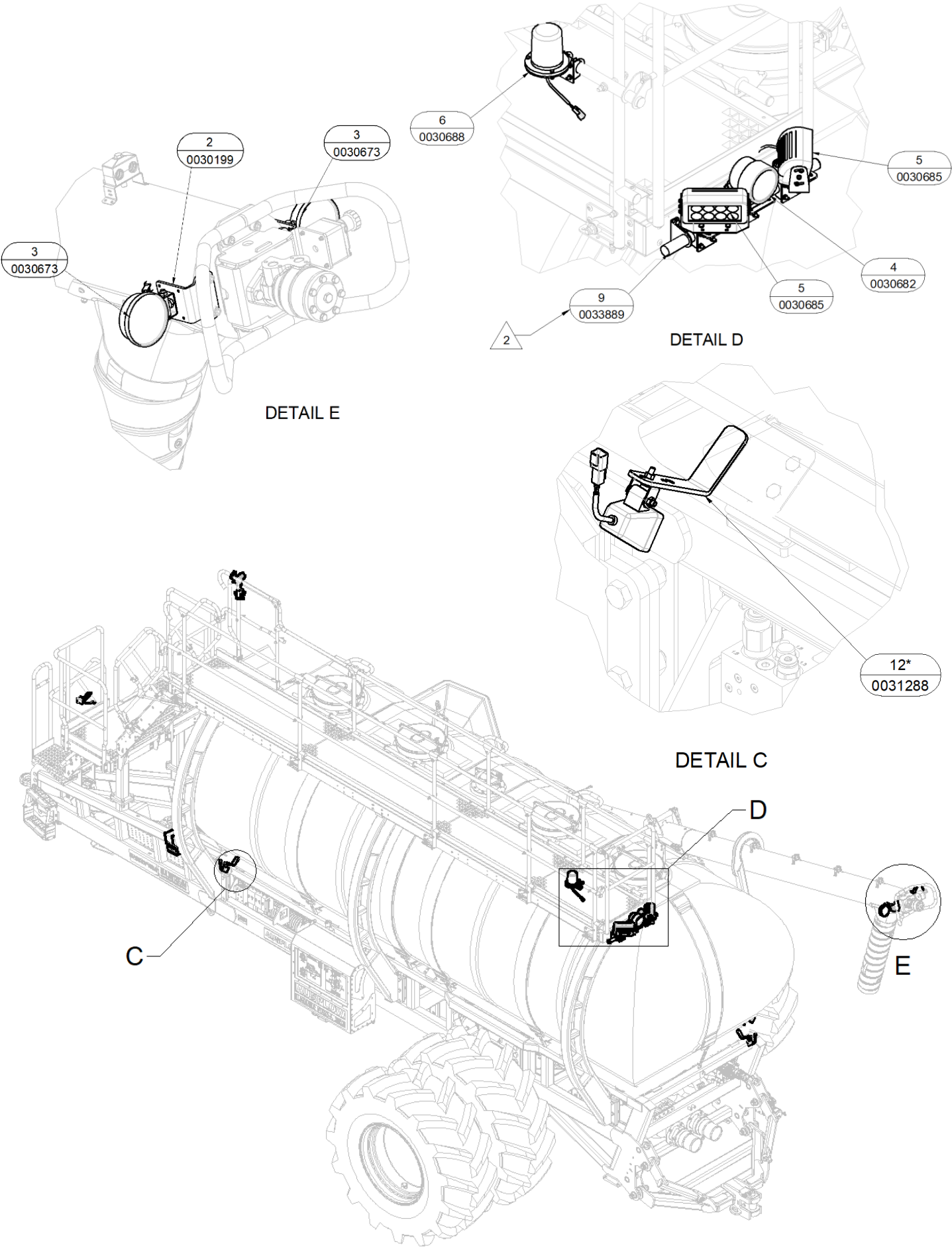
30672 LED Light Assembly 1x10W Flood

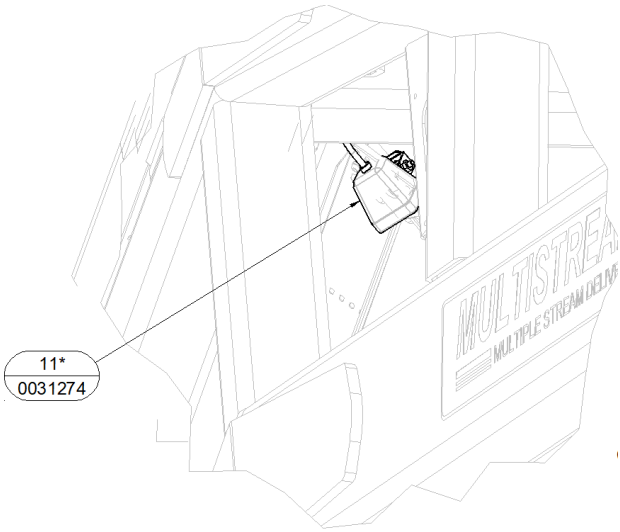
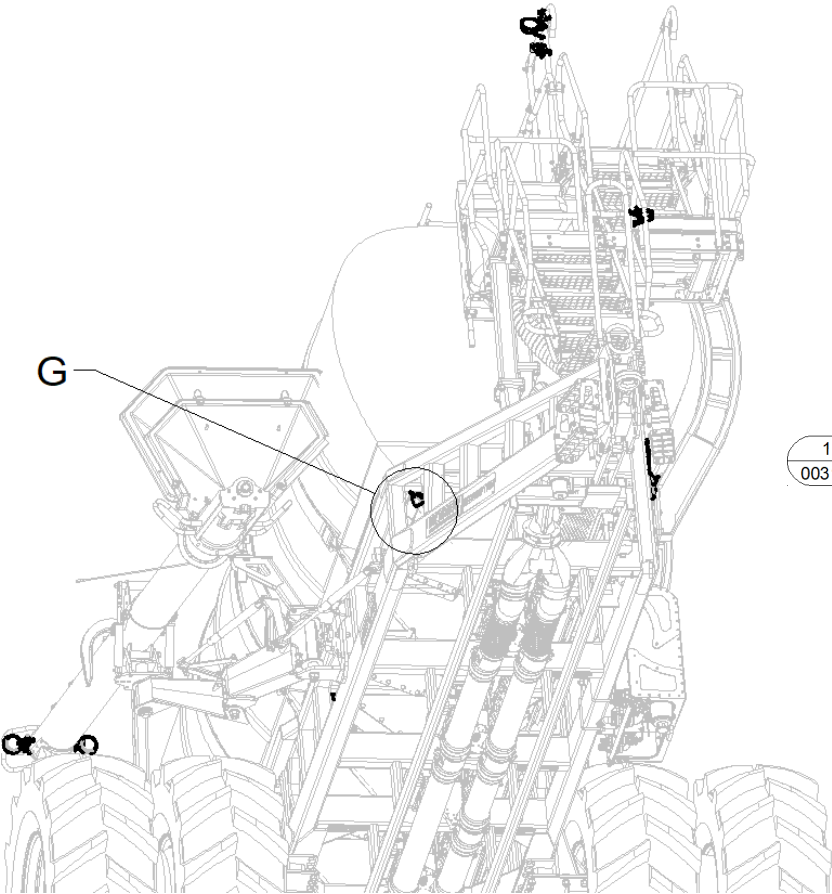


### 3.2 Multistream Series II Lighting Kit

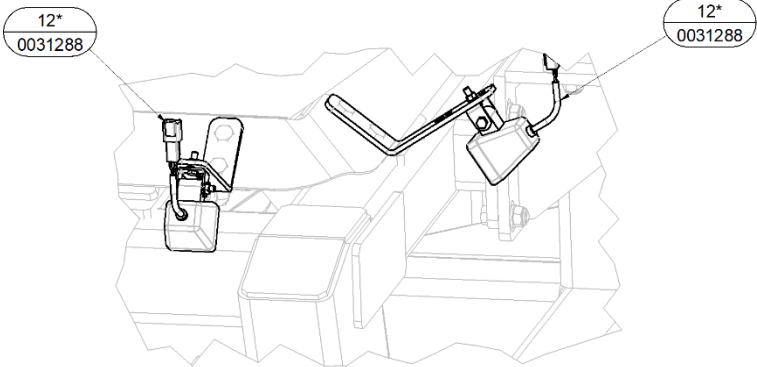
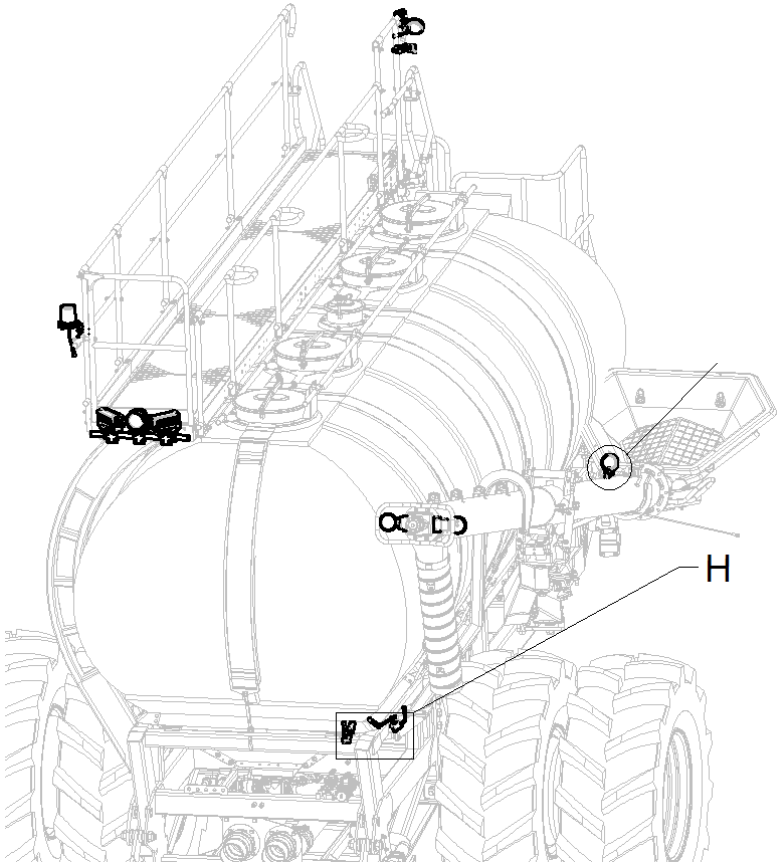




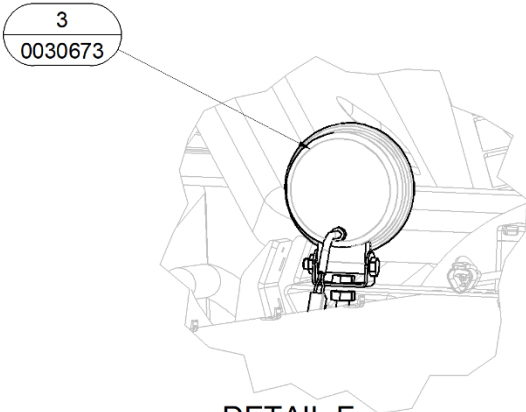




DETAIL G



DETAIL H



DETAIL F

## Ausplow Camera & Lighting Spare Parts Manual

Item#	Qty	Part#	Description
ALL	1	31157	MULTISTREAM SERIES II LIGHTING KIT
1	1	30113	LIGHT SWITCH BOX ASSY
2	2	30199	AUGER &E STOP LIGHT BRACKET
3	3	30673	LED FLOOD LIGHT ASY 9 x 3W
4	1	30682	IMPLEMENT LIGHT ASSY 40W
5	2	30685	IMPLEMENT LIGHT BAR ASSY 80W
6	1	30688	BEACON LIGHT ASSY
7	2	31209	WALKWAY FLOOD LIGHT 1 x 10W
8	1	31210	WALKWAY PLATFORM FLOOD LAMP 9x 3W
9	1	33889	COLLAPSIBLE HANDRAIL LIGHTS BAR ASSY
10	1	31269	LIGHT SWITCH ASSY – BOLT ON KIT (Series I Only)
11	5	31274	TANK SERVICE LIGHT 1 x 10W (for one tank)
12	3	31288	CONTROL STATION LIGHT 1 x 10W

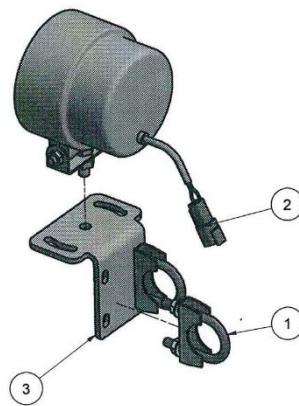


### 3.3 Multistream Series II Beacon Assy



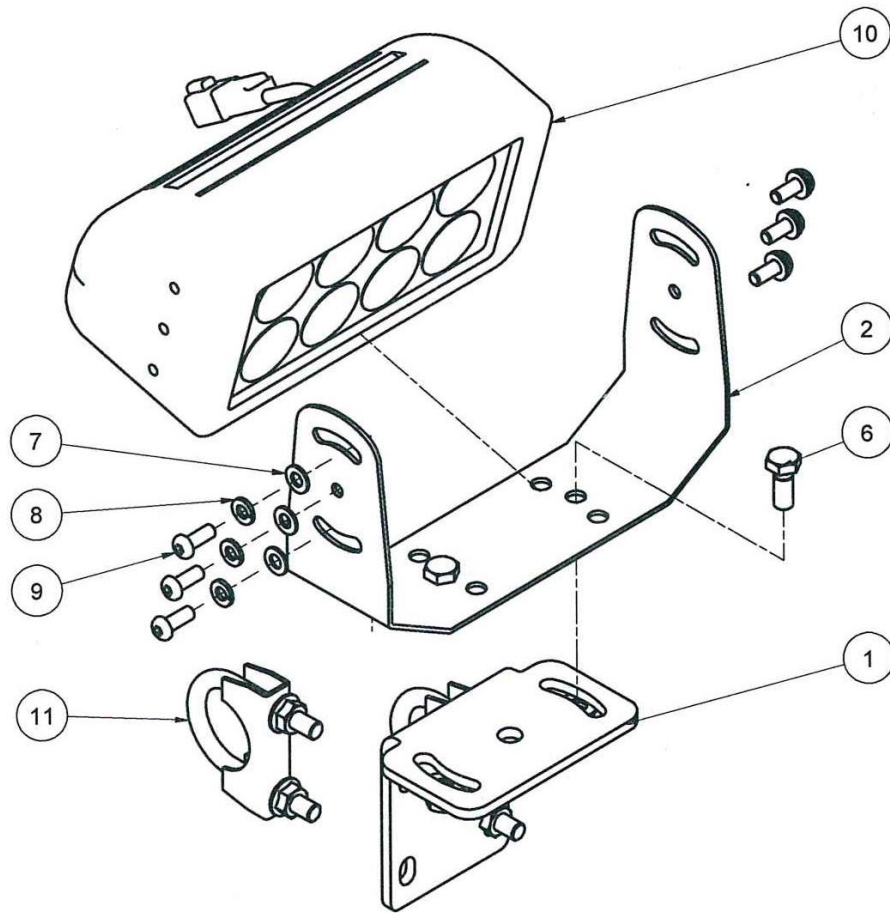
Item#	Qty	Part#	Description
ALL	1	30688	BEACON ASSEMBLY AMBER LED
1	1	30686	LED LIGHT ASSY BEACON AMBER
2	1	30687	BEACON MOUNT BRACKET
3	2	11360	EXHAUST CLAMP 35MM 1 3/8"
4	3	09194	NUT M6 SS316 NYLOC
5	3	09331	WASHER FLAT M6 SS316
6	3	09381	SCREW HEX M6X25 SS316

### 3.4 Multistream Series II Light Assy 40W



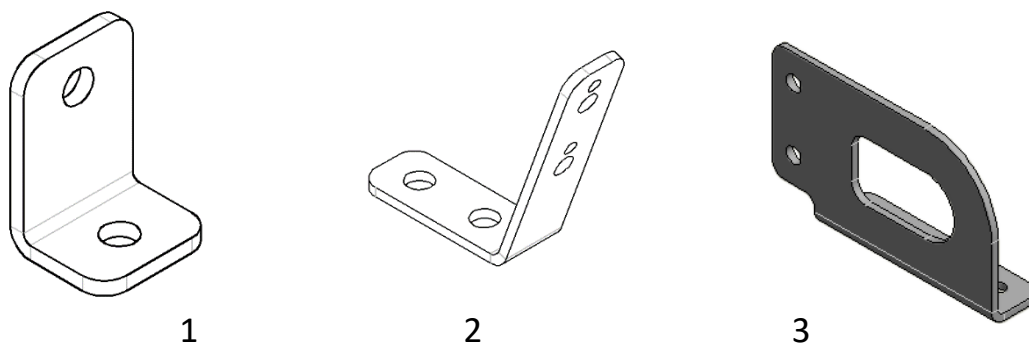
Item#	Qty	Part#	Description
ALL	1	30682	IMPLEMENT LIGHT ASSY 40W
1	2	11360	EXHAUST CLAMP 35MM 1 3/8"
2	1	30674	LED LIGHT ASSY 4X10W FLOOD
3	1	30680	FLOOD LIGHT BAR BRACKET

### 3.5 Multistream Series II Light Bar Assy

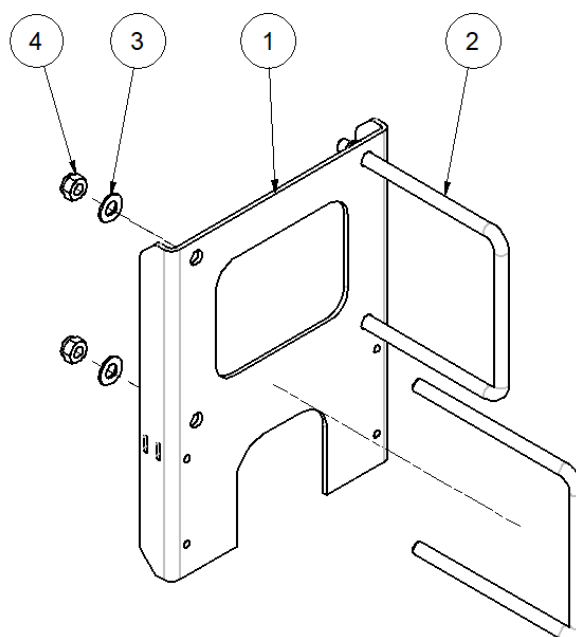


Item#	Qty	Part#	Description
ALL	1	30685	IMPLEMENT LIGHT BAR ASSY 80W
1	1	30680	FLOOD LIGHT BAR BRACKET
2	1	30684	BRACKET 8X10W 2 ROW LIGHTING KIT
3	2	09055	NUT M8 SS316
4	2	09105	WASHER SPRING M8 SS316
5	2	09106	WASHER FLAT M8 SS316
6	2	09127	SCREW HEX M8X20 SS316
7	6	09331	WASHER FLAT M6 SS316
8	6	09417	WASHER SPRING M6 SS316
9	6	09877	SCREW M6X16 BTN SKT HD SS304
10	1	09922	LED BAR LIGHT 8X10W 2 ROW CREE
11	2	11360	EXHAUST CLAMP 35MM 1 3/8"

### 3.6 Lighting Kit Brackets

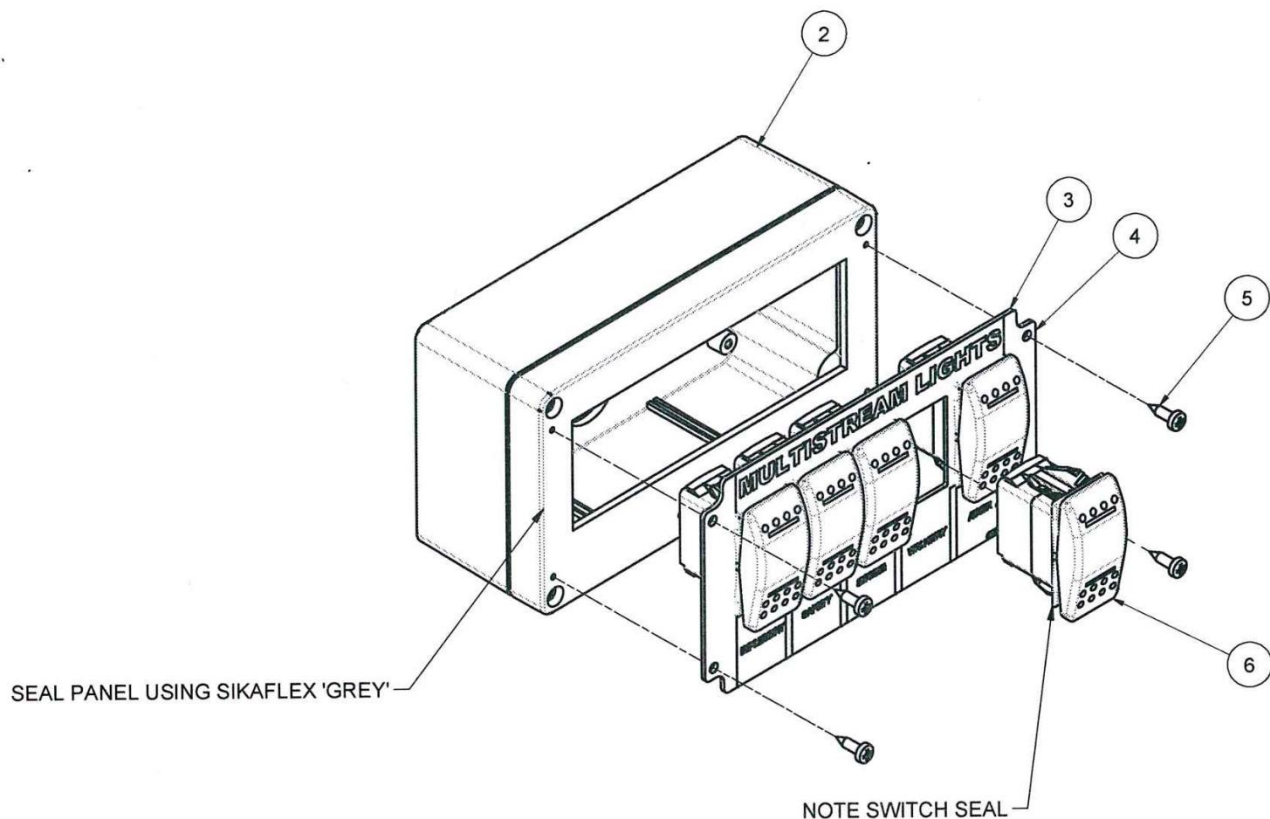


Item#	Part#	Description
1	30676	L BRACKET LIGHTING KIT
2	30675	CONE CORNER BRACKET LIGHTING KIT
3	30580	BRACKET POWER CONNECTOR



Item#	Part#	Description
All	30701	LIGHT SWITCH BOLT ON BRACKET
1	30700	LIGHT SWITCH BRACKET
2,3&4	11489	U BOLT SET M8 x 101 x 120mm

### 3.7 Multistream Series II Light Switch Box Assy



Item#	Qty	Part#	Description
ALL	1	30113	LIGHT SWITCH BOX ASSEMBLY SERIES II MULTISTREAM
1	NS	29611	HARNESS SWITCH BOX LIGHTING LOOM SERIES II
2	1	30114	ENCLOSURE TRIMMED LIGHT SWITCH BOX SERIES II
3	1	30115	SUPPORT PANEL LIGHT SWITCH BOX SERIES II
4	1	30116	DECAL FUNCTION LIGHT SWITCH BOX SERIES II
5	4	09807	SCREW #6X3/8" PAN HD SELF TAP. PHILLIPS SS304/316
6	5	09866	SWITCH TOGGLE VENTURA II SPST V1DAS00CAZC

### 3.8 Multistream Series II Lighting Harness

Part#	Description
29611	HARNESS SWITCH BOX LIGHTING
29613	HARNESS TRACTOR POWER LIGHTING (Battery to drawbar)
29617	HARNESS LIGHTING 4 BIN TBT
29619	HARNESS LIGHTING SPLITTER
30689	HARNESS LIGHTING SPLITTER M27 & M28000
30702	POWER EXTENSION 12m (Across bar for TBH bins)
30691	POWER EXTENSION 10A x 2m
30692	POWER EXTENSION 10A x 10m
30588	WALKWAY LIGHTING EXTENSION

### 3.9 Multistream Series II Lighting Kits

Part#	Description
16061	LIGHT KIT 3 BIN BASE LIGHTING KIT TBT
16062	LIGHT KIT 4 BIN BASE LIGHTING KIT TBT
16063	LIGHT KIT 5 BIN BASE LIGHTING KIT TBT
16064	LIGHT KIT 6 BIN BASE LIGHTING KIT TBT
16065	LIGHT KIT 7 BIN BASE LIGHTING KIT TBT
16066	LIGHT KIT 3 BIN BASE LIGHTING KIT TBH
16067	LIGHT KIT 4 BIN BASE LIGHTING KIT TBH
16068	LIGHT KIT 5 BIN BASE LIGHTING KIT TBH

This page is intentionally left blank